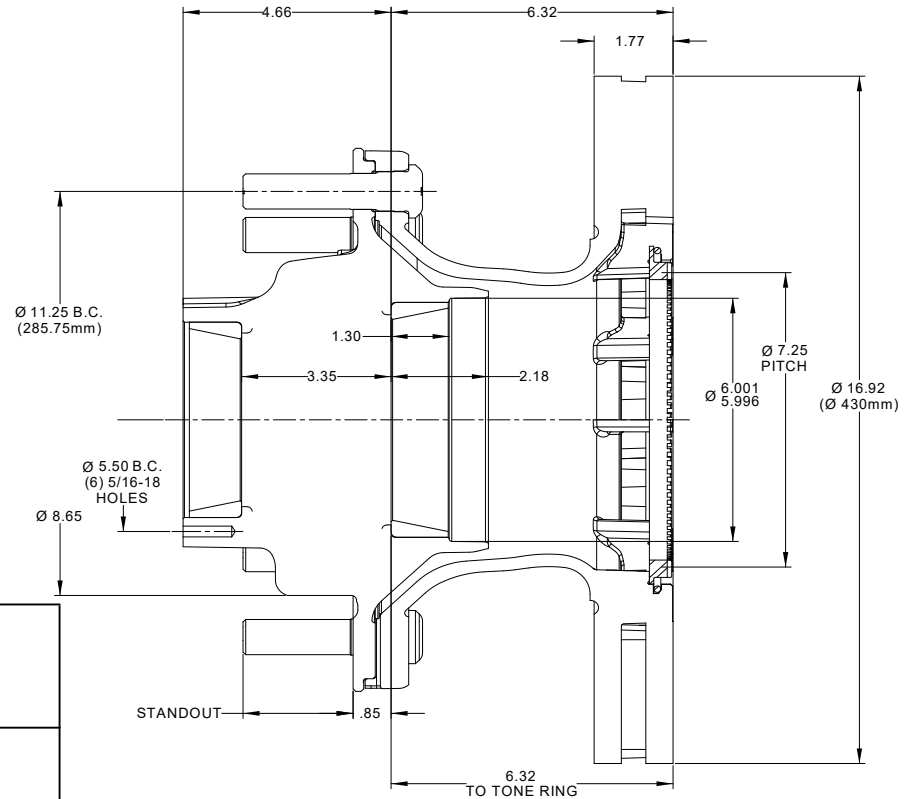


# Walther Engineering and Manufacturing Co., Inc.

Application Guide for 193 Hub with Fill Port and Magnetic Plug

## Dura-Light® Evolution™ Hub & Rotor Air Disc Assemblies for N Tapered-Spindle Axles w/430mm Rotor w/Magnetic Fill Plug

Part Number	Application	Standout	Lbs.	Bolts
1000193M-171240*	ABS Aluminum Dual Wheel	3.22"	122	02-00175
1000193M-172240*	ABS Steel Dual Wheel	2.46"	120	02-00195



N Bearings	
HM212011	bearing cup - outer bore
HM218210	bearing cup - inner bore
HM212049	bearing cone - outer bore
HM218248	bearing cone - inner bore

Rotor	
17-00240-S1	430mm Rotor Service Kit - Aluminum 93 lbs
17-00240-S2	430mm Rotor Service Kit - Steel 91 lbs

Component Part	
02-00166	9/16-18 Fill Plug - Magnetic 16-19 LB-FT

Hub Dynamic Load Ratings	
Single Wheel Offset	Load/Hub
0	11,250 lbs
0.56"	10,839 lbs
2.00"	10,000 lbs
2.38"	9,689 lbs
2.75"	9,484 lbs
3.50"	9,095 lbs
3.88"	8,910 lbs
6.66"	Prohibited

Estimated Lubricant Fill Volumes**	
22.4 fl-oz	Oil Lubrication Fill Level
101.76 cubic inches	Vol. Between Cup Seats Including Spindle Displacement
32 fl-oz	50% Fill Level for Semi-Fluid, Including Spindle Displacement

\*\* Actual lubricant volume should be adjusted for specific components used. See TMC RP 631C

\* Flanged wheel nuts not included