

# Walther Engineering and Manufacturing Co., Inc.



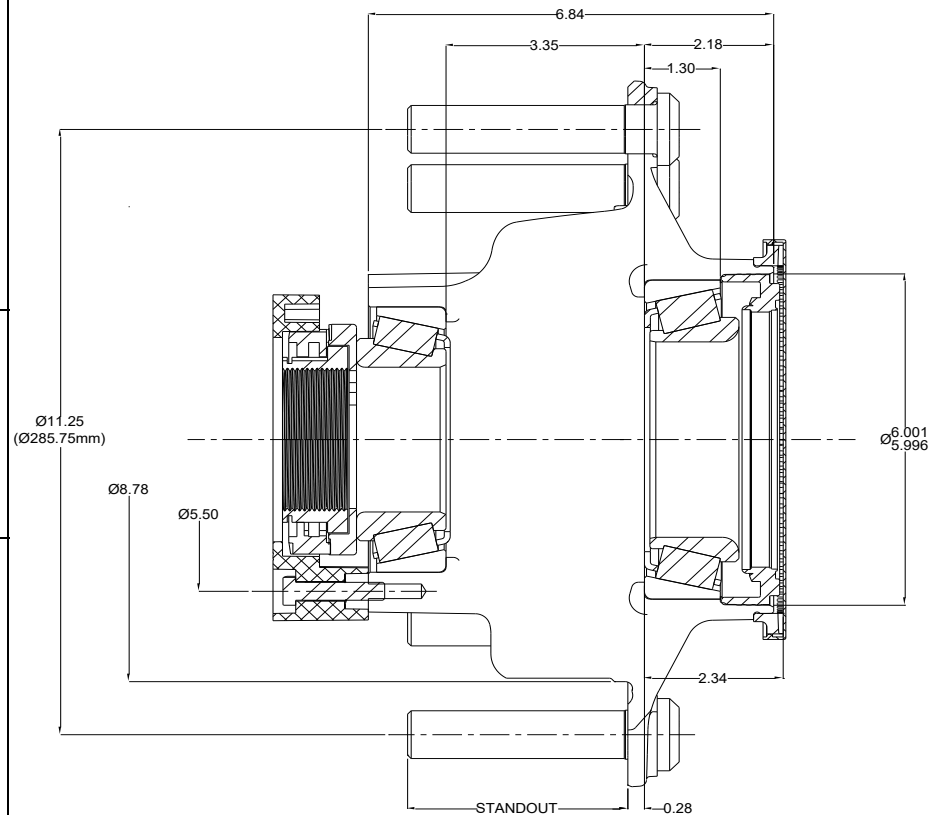
## Application Guide for 114 QuickSet Hub™

Dura-Light-Hubs™ N Tapered Spindle Axle with Scotseal™ X-Treme				Dura-Light-Hubs™ N Tapered Spindle Axle with Stemco Discover™ XR			
Part Number*†	Application	Standout Lbs.	Bolts	Part Number*†	Application	Standout	Lbs. Bolts
				111-20114-101	ABS Hub Piloted/Aluminum Dual Wheel	3.72"	44 02-00118
				111-20114-102	ABS Hub Piloted/Steel Dual Wheel	2.96"	43 02-00110

Dura-Light-Hubs™ N Tapered Spindle Axle with Scotseal™ X-Treme and Fill Plug				Dura-Light-Hubs™ N Tapered Spindle Axle with Stemco Discover™ XR and Fill Plug			
Part Number*†	Application	Standout Lbs.	Bolts	Part Number*†	Application	Standout	Lbs. Bolts
				111-20114M-101	ABS Hub Piloted/Aluminum Dual Wheel	3.72"	44 02-00118
				111-20114M-102	ABS Hub Piloted/Steel Dual Wheel	2.96"	43 02-00110

† Contact us at [waltheremc.com](http://waltheremc.com)

Dimensions for all part number configurations



### N Bearings

HM212011	bearing cup - outer bore
HM218210	bearing cup - inner bore
HM212049	bearing cone - outer bore
HM218248	bearing cone - inner bore

\* Part Numbers listed are assembled with General Bearing cups and cones.

# Part Numbers listed are assembled with Stemco cups and cones.

### Component Parts

05-00037	Tone Ring - 100 Teeth, 6.77 Dia. Pitch Circle	.7 lbs
46300XT	Scotseal™ X-Treme	
373-0443	Stemco Discover™ XR	
480-4743	Stemco Auto-Torq™	
90-00252	Nut Retainer	
02-00254	5/16-18 x 1.5, Hex Bolt	
90-00256	5/16 Push Nut	
02-00166	9/16-18 Fill Plug - Magnetic	Torque 16-19 LB-FT

### Hub Dynamic Load Ratings

Single Wheel Offset	Load/Hub
0	11,250 lbs
0.56"	10,839 lbs
2.00"	10,000 lbs
2.38"	9,689 lbs
2.75"	9,484 lbs
3.50"	9,095 lbs
3.88"	8,910 lbs
6.66"	Prohibited

### Estimated Lubricant Fill Volumes\*\*

<b>22 fl-oz</b>	Oil Lubrication Fill Level
<b>101.06 cubic inches</b>	Vol. Between Cup Seats Including Spindle Displacement
<b>28.8 fl-oz</b>	50% Fill Level for Semi-Fluid, Including Spindle Displacement

\*\* Actual lubricant volume should be adjusted for specific components used. See TMC RP 631C

Scotseal™ X-Treme is a registered trademark for SKF

Discover™ XR and Auto-Torq™ is a registered trademark for Stemco