

Trailer Wheel End Catalog

Hubs • Rotors • Drums • Parts

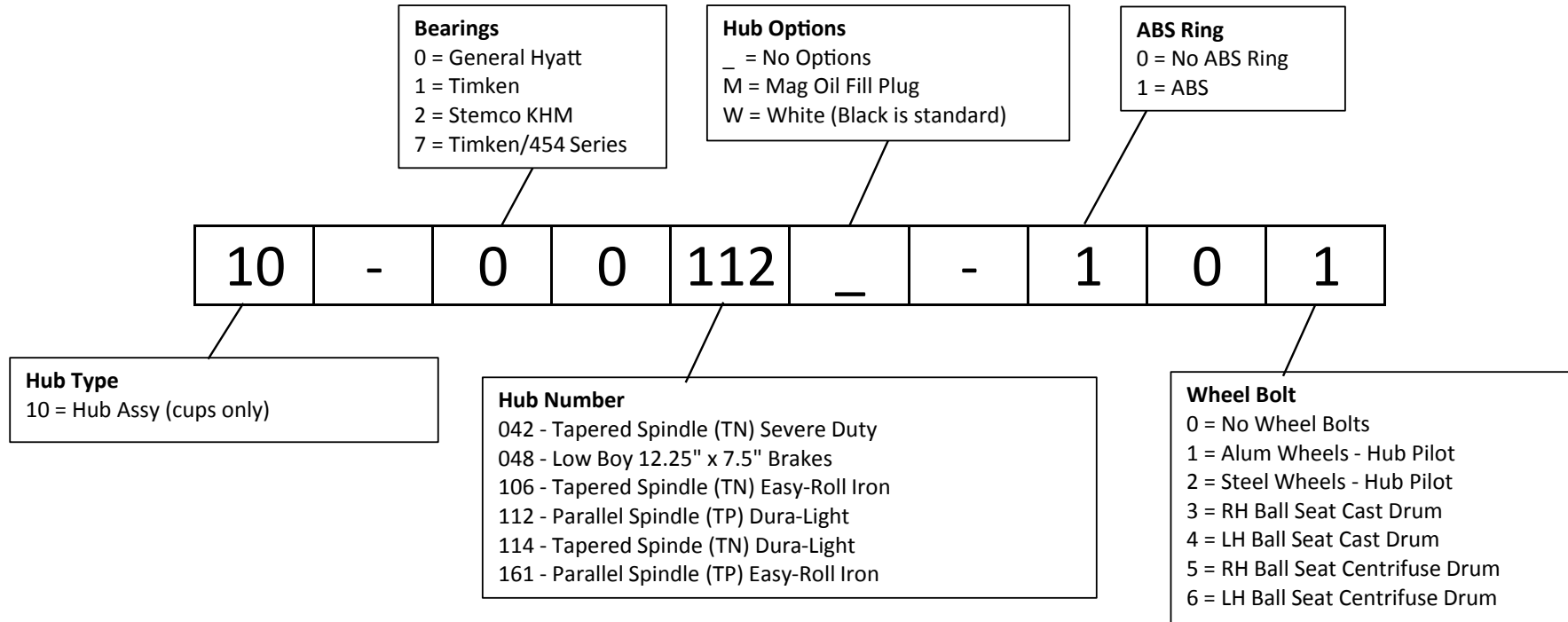


Rev: 021320

Table of Contents

1– Hub, Hub and Drum Assemblies	
1.1 – Hub Code Sheet – Build a part number	PG 3
1.2 Tapered and Parallel Spindles	PG 4-23
1.2.1 Lightweight Dura-Light	PG 4-12
1.2.2 Standard Iron Easy-Roll	PG 13-23
1.3 Lift Axles	PG 24-30
2– Hub Rotors for ADB	PG 31-33
3– Rotor Replacement Options	PG 34
4– Drums	PG 35
5– Visually Identify your Walther EMC hub	PG 36
6– Wheel Bolts and Hardware	PG 37
7– Cross References	PG 38-40

Trailer Hub Code Sheet



Examples

- 10-00112-101
- 10-00112M-101



The lightest hubs
in the industry
just got lighter...
and stronger!

Dura-Light Evolution™ Hubs

Join the Evolution™ Revolution!

Experience	Leading the industry for more than 15 years
Weight	The Lightest Hub in the industry...period More freight, better fuel economy
Durable	The strength of steel forgings
Serviceable	Wheel bolts and bearings are easy to replace
E-Coating	Outperforms powder and water-based coatings
Warranty	Life-of-the-Vehicle Warranty

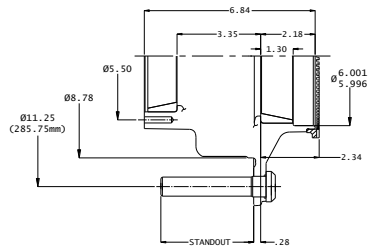
ALWAYS...

**MADE IN
THE USA!**

Phone: 937.743.8125 x 600
www.waltheremc.com

Dura-Light-Hubs® Evolution™ For N Tapered Spindle Axle with Fill Plug

Part Number	Application	Standout	Lbs.	Bolts
10-00114M-001	Hub Piloted/Aluminum Dual Wheel	3.72"	32	02-00118
10-00114M-002	Hub Piloted/Steel Dual Wheel	2.96"	31	02-00110
10-00114M-003	Stud Piloted RH/Cast Brake Drum	1.89"	29	02-00027
10-00114M-004	Stud Piloted LH/Cast Brake Drum	1.89"	29	20-00028
10-00114M-005	Stud Piloted RH/Fused Drum	1.63"	29	02-00031
10-00114M-006	Stud Piloted LH/Fused Drum	1.63"	29	20-00032
10-00114M-101	ABS Hub Piloted/Aluminum Dual Wheel	3.72"	33	02-00118
10-00114M-102	ABS Hub Piloted/Steel Dual Wheel	2.96"	32	02-00110
10-00114M-103	ABS Stud Piloted RH/Cast Brake Drum	1.89"	30	02-00027
10-00114M-104	ABS Stud Piloted LH/Cast Brake Drum	1.89"	30	20-00028
10-00114M-105	ABS Stud Piloted RH/Fused Drum	1.63"	30	02-00031
10-00114M-106	ABS Stud Piloted LH/Fused Drum	1.63"	30	20-00032



N Bearings

HM212011	bearing cup - outer bore
HM218210	bearing cup - inner bore
HM212049	bearing cone - outer bore
HM218248	bearing cone - inner bore

Drums

03-00043	16.5 x 7" Cast Brake Drum	108 lbs
89996B	16.5 x 7" Centrifuse® Brake Drum	90 lbs
13-00060	16.5 x 8.62" Balanced Brake Drum	122 lbs

Component Parts

02-39702	Metform - Two-piece, Flanged Wheel Nut, M22x1.5	.4 lbs
05-00037	Tone Ring - 100 Teeth, 6.77 Dia. Pitch Circle	.7 lbs
02-00166	9/16-18 Fill Plug - Magnetic	Torque 16-19 LB-FT

Hub Dynamic Load Ratings

Single Wheel Offset	Load/Hub
0	11,250 lbs
0.56"	10,839 lbs
2.00"	10,000 lbs
2.38"	9,689 lbs
2.75"	9,484 lbs
3.50"	9,095 lbs
3.88"	8,910 lbs
6.66"	Prohibited

Estimated Lubricant Fill Volumes**

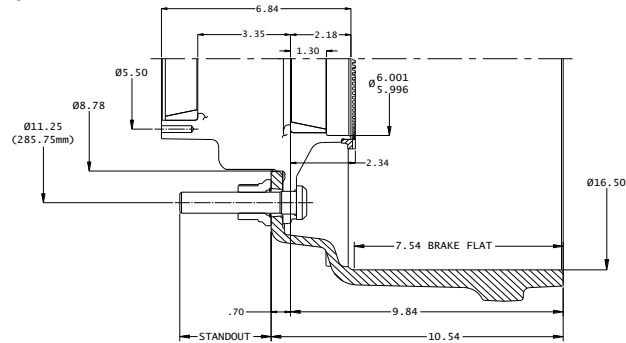
22 fl-oz	Oil Lubrication Fill Level
101.06 cubic inches	Vol. Between Cup Seats Including Spindle Displacement
28.8 fl-oz	50% Fill Level for Semi-Fluid, Including Spindle Displacement

** Actual lubricant volume should be adjusted for specific components used. See TMC RP 631B

Dura-Light Hubs® Evolution™ for N Straight-Spindle Axles 16.5 x 7" Cast Brake Drum with Fill Plug

Part Number	Application	Standout	Lbs.	Bolts
1003114M-031043*	Hub/Cast Drum Assy, HP, AL Whl	3.30"	143	02-00118
1003114M-032043*	Hub/Cast Drum Assy, HP, ST Whl	2.54"	142	02-00110
1006114M-033043	Hub/Cast Drum Assy, SP, RH	1.47"	139	02-00027
1007114M-034043	Hub/Cast Drum Assy, SP, LH	1.47"	139	20-00028
1003114M-131043*	ABS Hub/Cast Drum Assy, HP, AI Whl	3.30"	144	02-00118
1003114M-132043*	ABS Hub/Cast Drum Assy, HP, St Whl	2.54"	143	02-00110
1006114M-133043	ABS Hub/Cast Drum Assy, SP, RH	1.47"	140	02-00027
1007114M-134043	ABS Hub/Cast Drum Assy, SP, LH	1.47"	140	20-00028

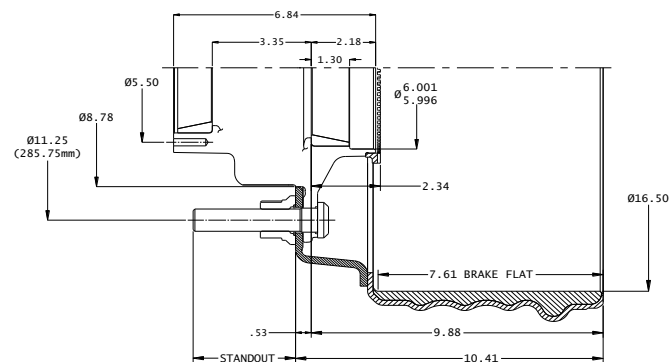
* Includes two flanged wheel nuts



Dura-Light Hubs® N Tapered Spindle Axle with 16.5 x 7" Centrifuse® Brake Drum with Fill Plug

Part Number	Application	Standout	Lbs.	Bolts
1003114M-041095*	Hub/Fused Drum Assy, HP, AL Whl	3.47"	124	02-00118
1003114M-042095*	Hub/Fused Drum Assy, HP, ST Whl	2.71"	123	02-00110
1006114M-045095	Hub/Fused Drum Assy, SP, RH	1.33"	120	02-00031
1007114M-046095	Hub/Fused Drum Assy, SP, LH	1.33"	120	20-00032
1003114M-141095*	ABS Hub/Fused Drum Assy, HP, AL Whl	3.47"	125	02-00118
1003114M-142095*	ABS Hub/Fused Drum Assy, HP, ST Whl	2.71"	124	02-00110
1006114M-145095	ABS Hub/Fused Drum Assy, SP, RH	1.33"	121	02-00031
1007114M-146095	ABS Hub/Fused Drum Assy, SP, LH	1.33"	121	20-00032

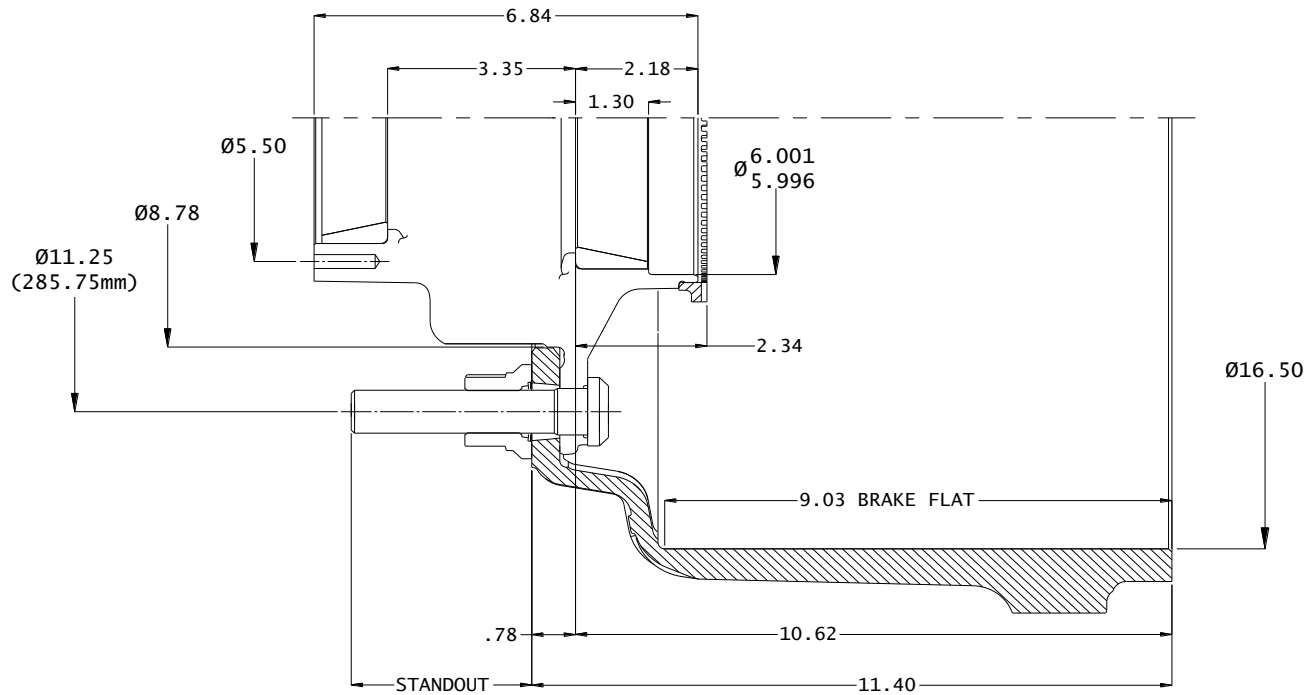
* Includes two flanged wheel nuts



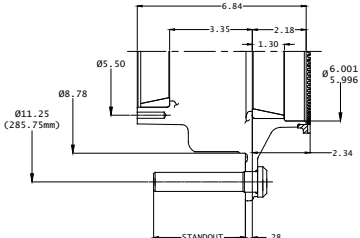
Dura-Light-Hubs® N Tapered Spindle Axle with 16.5 x 8.62" Balanced Brake Drum with Fill Plug

Part Number	Application	Standout	Lbs.	Bolts
1003114M-021060*	Hub/Bal Drum Assy,HP,AL Whl	3.22"	156	02-00118
1003114M-022060*	Hub/Bal Drum Assy,HP,ST Whl	2.46"	155	02-00110
1006114M-023060	Hub/Bal Drum Assy,SP,RH	1.34"	152	02-00027
1007114M-024060	Hub/Bal Drum Assy, SP,LH	1.34"	152	20-00028
1003114M-121060* ABS	Hub/Bal Drum Assy,HP,Al Whl	3.22"	156	02-00118
1003114M-122060* ABS	Hub/Bal Drum Assy,HP,St Whl	2.46"	155	02-00110
1006114M-123060 ABS	Hub/Bal Drum Assy,SP,RH	1.34"	152	02-00027
1007114M-124060 ABS	Hub/Bal Drum Assy,SP,LH	1.34"	152	20-00028

* Includes two flanged wheel nuts



Part Number	Application	Standout Lbs.	Bolts
Dura-Light-Hubs® N Tapered Spindle Axle			
10-00114-001	Hub Piloted/Aluminum Dual Wheel	3.72"	32 02-00118
10-00114-002	Hub Piloted/Steel Dual Wheel	2.96"	31 02-00110
10-00114-003	Stud Piloted RH/Cast Brake Drum	1.89"	29 02-00027
10-00114-004	Stud Piloted LH/Cast Brake Drum	1.89"	29 20-00028
10-00114-005	Stud Piloted RH/Fused Drum	1.63"	29 02-00031
10-00114-006	Stud Piloted LH/Fused Drum	1.63"	29 20-00032
10-00114-101	ABS Hub Piloted/Aluminum Dual Wheel	3.72"	33 02-00118
10-00114-102	ABS Hub Piloted/Steel Dual Wheel	2.96"	32 02-00110
10-00114-103	ABS Stud Piloted RH/Cast Brake Drum	1.89"	30 02-00027
10-00114-104	ABS Stud Piloted LH/Cast Brake Drum	1.89"	30 20-00028
10-00114-105	ABS Stud Piloted RH/Fused Drum	1.63"	30 02-00031
10-00114-106	ABS Stud Piloted LH/Fused Drum	1.63"	30 20-00032



N Bearings	
HM212011	bearing cup - outer bore
HM218210	bearing cup - inner bore
HM212049	bearing cone - outer bore
HM218248	bearing cone - inner bore

Drums		
03-00043	16.5 x 7" Cast Brake Drum	108 lbs
89996B	16.5 x 7" Centrifuse® Brake Drum	90 lbs
13-00060	16.5 x 8.62" Balanced Brake Drum	122 lbs

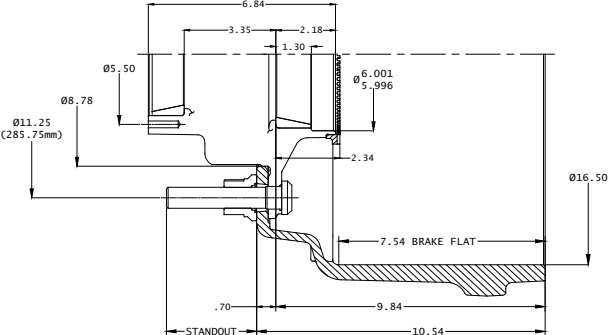
Component Parts		
02-39702	Metform - Two-piece, Flanged Wheel Nut, M22x1.5	.4 lbs

Hub Dynamic Load Ratings	
Wheel Offset	Load/Hub
0	11,250 lbs
0.56"	10,839 lbs
2.00"	10,000 lbs
2.38"	9,689 lbs
2.75"	9,484 lbs
3.50"	9,095 lbs
3.88"	8,910 lbs
6.66"	N/A

Lubricant Fill Volumes	
22 fl-oz	Oil Lubrication Fill Level
101.06 cubic inches	Vol. Between Cup Seats Including Spindle Displacement
28 fl-oz	50% Fill Level for Semi-Fluid, Including Spindle Displacement

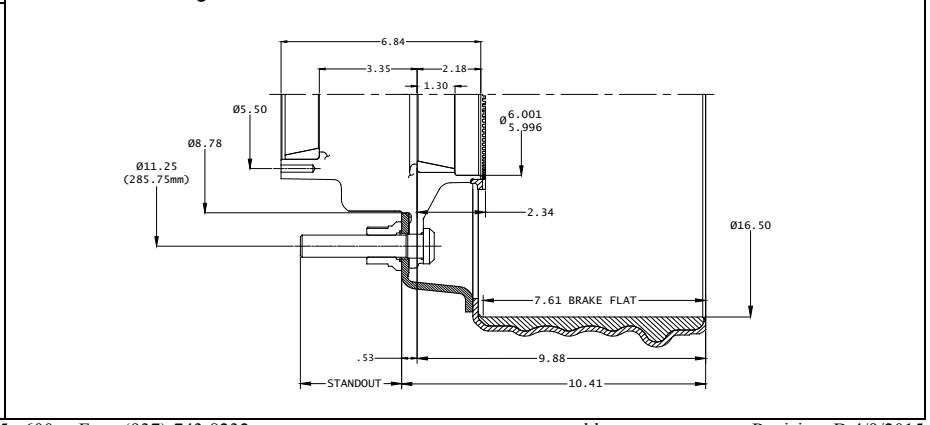
Part Number	Application	Standout Lbs.	Bolts
Dura-Light Hubs® N Tapered Spindle Axle with 16.5 x 7" Cast Brake Drum			
1003114-031043*	Hub/Cast Drum Assy, HP, AL Whl	3.30"	143 02-00118
1003114-032043*	Hub/Cast Drum Assy, HP, ST Whl	2.54"	142 02-00110
1006114-033043	Hub/Cast Drum Assy, SP, RH	1.47"	139 02-00027
1007114-034043	Hub/Cast Drum Assy, SP, LH	1.47"	139 20-00028
1003114-131043*	ABS Hub/Cast Drum Assy, HP, AL Whl	3.30"	144 02-00118
1003114-132043*	ABS Hub/Cast Drum Assy, HP, ST Whl	2.54"	143 02-00110
1006114-133043	ABS Hub/Cast Drum Assy, SP, RH	1.47"	140 02-00027
1007114-134043	ABS Hub/Cast Drum Assy, SP, LH	1.47"	140 20-00028

* Includes two flanged wheel nuts



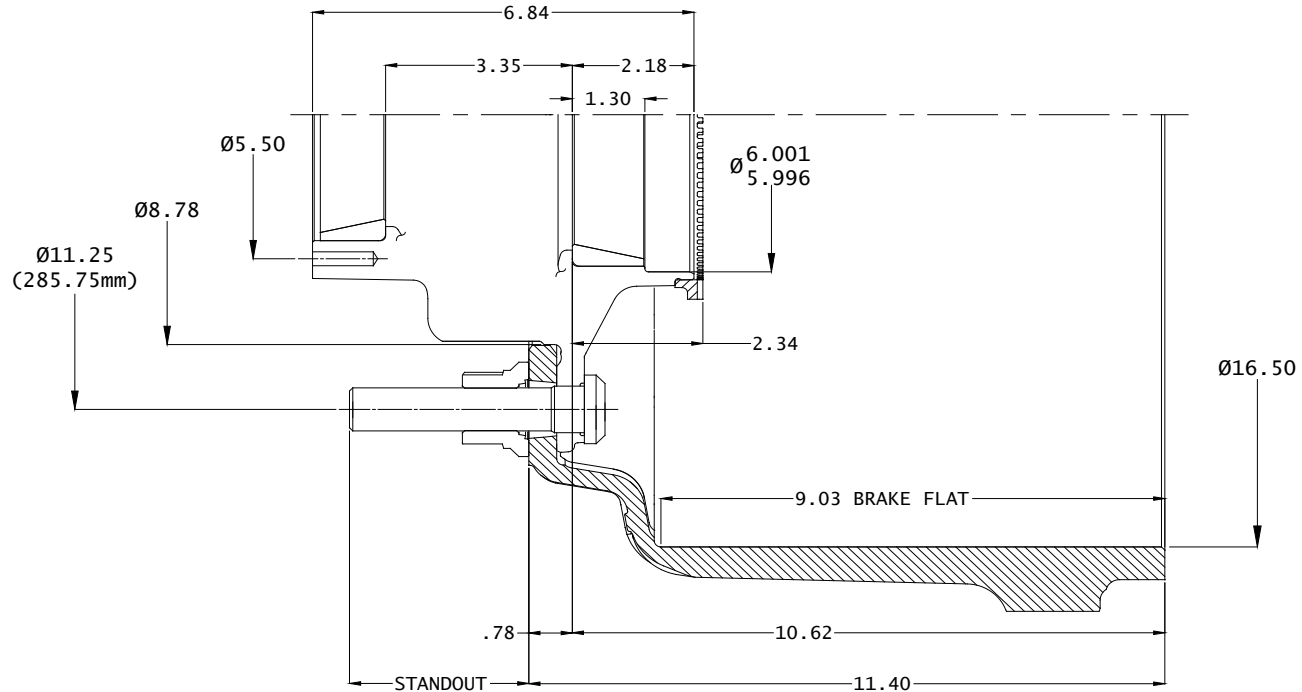
Dura-Light Hubs® N Tapered Spindle Axle with 16.5 x 7" Centrifuse® Brake Drum			
1003114-041095*	Hub/Fused Drum Assy, HP, AL Whl	3.47"	124 02-00118
1003114-042095*	Hub/Fused Drum Assy, HP, ST Whl	2.71"	123 02-00110
1006114-045095	Hub/Fused Drum Assy, SP, RH	1.33"	120 02-00031
1007114-046095	Hub/Fused Drum Assy, SP, LH	1.33"	120 20-00032
1003114-141095*	ABS Hub/Fused Drum Assy, HP, AL Whl	3.47"	125 02-00118
1003114-142095*	ABS Hub/Fused Drum Assy, HP, ST Whl	2.71"	124 02-00110
1006114-145095	ABS Hub/Fused Drum Assy, SP, RH	1.33"	121 02-00031
1007114-146095	ABS Hub/Fused Drum Assy, SP, LH	1.33"	121 20-00032

* Includes two flanged wheel nuts



Part Number	Application	Standout	Lbs.	Bolts
<u>Dura-Light-Hubs® N Tapered Spindle Axle with 16.5 x 8.62" Balanced Brake Drum</u>				
1003114-021060*	Hub/Bal Drum Assy,HP,AL Whl	3.22"	156	02-00118
1003114-022060*	Hub/Bal Drum Assy,HP,ST Whl	2.46"	155	02-00110
1006114-023060	Hub/Bal Drum Assy,SP,RH	1.34"	152	02-00027
1007114-024060	Hub/Bal Drum Assy, SP,LH	1.34"	152	20-00028
1003114-121060* ABS	Hub/Bal Drum Assy,HP,Al Whl	3.22"	156	02-00118
1003114-122060* ABS	Hub/Bal Drum Assy,HP,St Whl	2.46"	155	02-00110
1006114-123060 ABS	Hub/Bal Drum Assy,SP,RH	1.34"	152	02-00027
1007114-124060 ABS	Hub/Bal Drum Assy,SP,LH	1.34"	152	20-00028

* Includes two flanged wheel nuts



Dura-Light-Hubs® Evolution™ For P Spindle Axle with Fill Plug				
Part Number	Application	Standout	Lbs.	Bolts
10-00112M-001	Hub Piloted/Aluminum Dual Wheel	3.72"	34	02-00118
10-00112M-002	Hub Piloted/Steel Dual Wheel	2.96"	33	02-00110
10-00112M-003	Stud Piloted RH/Cast Brake Drum	1.89"	31	02-00027
10-00112M-004	Stud Piloted LH/Cast Brake Drum	1.89"	31	20-00028
10-00112M-005	Stud Piloted RH/Fused Drum	1.63"	31	02-00031
10-00112M-006	Stud Piloted LH/Fused Drum	1.63"	31	20-00032
10-00112M-101	ABS Hub Piloted/Aluminum Dual Wheel	3.72"	35	02-00118
10-00112M-102	ABS Hub Piloted/Steel Dual Wheel	2.96"	34	02-00110
10-00112M-103	ABS Stud Piloted RH/Cast Brake Drum	1.89"	32	02-00027
10-00112M-104	ABS Stud Piloted LH/Cast Brake Drum	1.89"	32	20-00028
10-00112M-105	ABS Stud Piloted RH/Fused Drum	1.63"	32	02-00031
10-00112M-106	ABS Stud Piloted LH/Fused Drum	1.63"	32	20-00032

P Bearings	
HM518410	bearing cup - outer bore
HM518410	bearing cup - inner bore
HM518445	bearing cone - outer bore
HM518445	bearing cone - inner bore

Drums		
03-00043	16.5 x 7" Cast Brake Drum	108 lbs
89996B	16.5 x 7" Centrifuse® Brake Drum	90 lbs
13-00060	16.5 x 8.62" Bal. Cast Brake Drum	122 lbs

Component Parts			
02-39702	Metform - Two-piece, Flanged Wheel Nut,M22x1.5		.4 lbs
05-00037	Tone Ring - 100 Teeth, 6.77 Dia. Pitch Circle		.7 lbs
02-00166	9/16-18 Fill Plug - Magnetic	Torque 16-19 LB-FT	

Hub Dynamic Load Ratings	
Single Wheel Offset	Load/Hub
0	12,500 lbs
0.56"	12,043 lbs
2.00"	11,000 lbs
2.38"	10,765 lbs
2.75"	10,538 lbs
3.50"	10,105 lbs
3.88"	9,899 lbs
6.66"	Prohibited

Estimated Lubricant Fill Volumes**	
33.50 fl-oz	Oil Lubrication Fill Level
139.20 cubic inches	Vol. Between Cup Seats Including Spindle Displacement
41.6 fl-oz	50% Fill Level for Semi-Fluid, Including Spindle Displacement

** Actual lubricant volume should be adjusted for specific components used. See TMC RP 631B

Dura-Light Hubs® Evolution™ for P Straight-Spindle Axles 16.5 x 7" Cast Brake Drum with Fill Plug				
Part Number	Application	Standout	Lbs.	Bolts
1003112M-031043*	Hub/Cast Drum Assy,HP,AL Whl	3.30"	145	02-00118
1003112M-032043*	Hub/Cast Drum Assy,HP,ST Whl	2.54"	143	02-00110
1006112M-033043	Hub/Cast Drum Assy,SP,RH	1.47"	141	02-00027
1007112M-034043	Hub/Cast Drum Assy, SP,LH	1.47"	141	20-00028
1003112M-131043*	ABS Hub/Cast Drum Assy,HP,Al Whl	3.30"	145	02-00118
1003112M-132043*	ABS Hub/Cast Drum Assy,HP,St Whl	2.54"	144	02-00110
1006112M-133043	ABS Hub/Cast Drum Assy,SP,RH	1.47"	141	02-00027
1007112M-134043	ABS Hub/Cast Drum Assy,SP,LH	1.47"	141	20-00028

* Includes two flanged wheel nuts

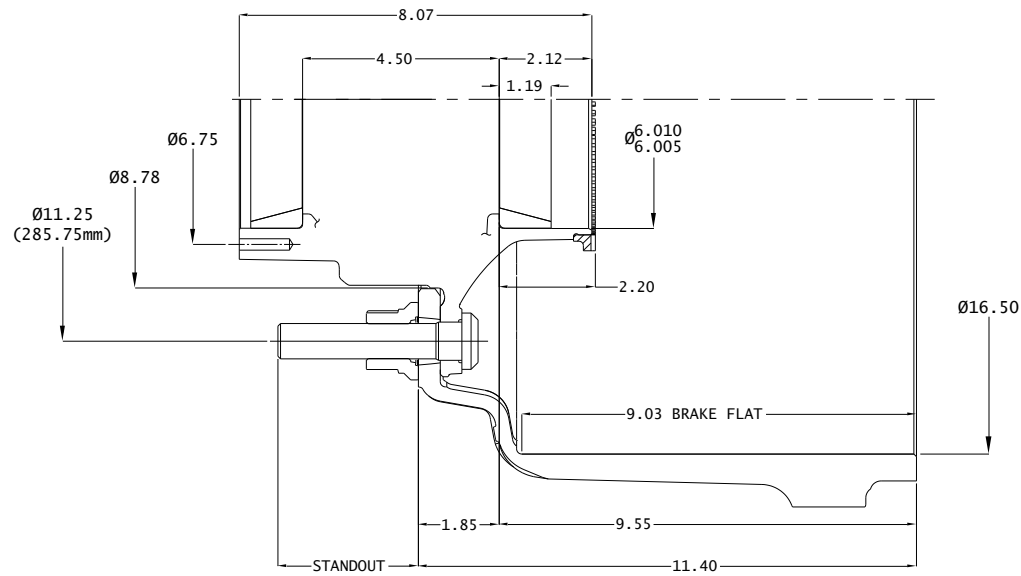
Dura-Light Hubs® Evolution™ for P Straight-Spindle Axles 16.5 x 7" Centrifuse® with Fill Plug				
Part Number	Application	Standout	Lbs.	Bolts
1003112M-041095*	Hub/Fused Drum Assy,HP,AL Whl	3.47"	126	02-00118
1003112M-042095*	Hub/Fused Drum Assy,HP,ST Whl	2.71"	125	02-00110
1006112M-045095	Hub/Fused Drum Assy,SP,RH	1.39"	122	02-00031
1007112M-046095	Hub/Fused Drum Assy,SP,LH	1.39"	122	20-00032
1003112M-141095*	ABS Hub/Fused Drum Assy,HP,AL Whl	3.47"	127	02-00118
1003112M-142095*	ABS Hub/Fused Drum Assy,HP,ST Whl	2.71"	126	02-00110
1006112M-145095	ABS Hub/Fused Drum Assy,SP,RH	1.39"	123	02-00031
1007112M-146095	ABS Hub/Fused Drum Assy,SP,LH	1.39"	123	20-00032

* Includes two flanged wheel nuts

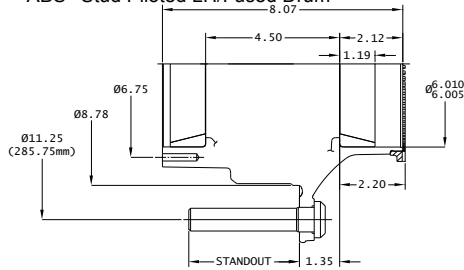
Dura-Light Hubs® Evolution™ for P Straight-Spindle Axles with 16.5 x 8.62" Cast Brake Drum with Fill Plug

Part Number	Application	Standout	Lbs.	Bolts
1003112M-021060*	Hub/Bal Drum Assy,HP,AL Whl	3.22"	157	02-00118
1003112M-022060*	Hub/Bal Drum Assy,HP,ST Whl	2.46"	157	02-00110
1006112M-023060	Hub/Bal Drum Assy,SP,RH	1.34"	153	02-00027
1007112M-024060	Hub/Bal Drum Assy, SP,LH	1.34"	153	20-00028
1003112M-121060* ABS	Hub/Bal Drum Assy,HP,Al Whl	3.22"	158	02-00118
1003112M-122060* ABS	Hub/Bal Drum Assy,HP,St Whl	2.46"	158	02-00110
1006112M-123060 ABS	Hub/Bal Drum Assy,SP,RH	1.34"	154	02-00027
1007112M-124060 ABS	Hub/Bal Drum Assy,SP,LH	1.34"	154	20-00028

* Includes two flanged wheel nuts

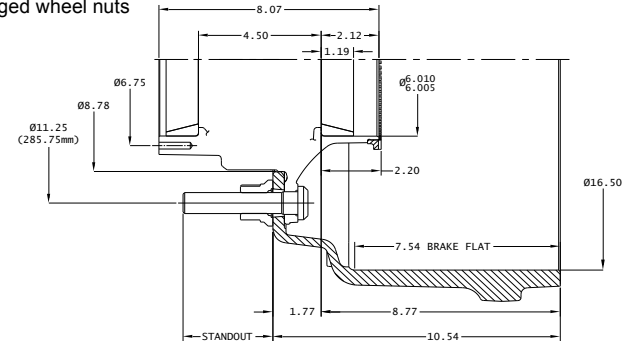


Part Number	Application	Standout	Lbs.	Bolts
Dura-Light Hubs® Evolution™ for P Straight-Spindle Axles				
10-00112-001	Hub Piloted/Aluminum Dual Wheel	3.72"	34	02-00118
10-00112-002	Hub Piloted/Steel Dual Wheel	2.96"	33	02-00110
10-00112-003	Stud Piloted RH/Cast Brake Drum	1.89"	31	02-00027
10-00112-004	Stud Piloted LH/Cast Brake Drum	1.89"	31	20-00028
10-00112-005	Stud Piloted RH/Fused Drum	1.63"	31	02-00031
10-00112-006	Stud Piloted LH/Fused Drum	1.63"	31	20-00032
10-00112-101	ABS Hub Piloted/Aluminum Dual Wheel	3.72"	35	02-00118
10-00112-102	ABS Hub Piloted/Steel Dual Wheel	2.96"	34	02-00110
10-00112-103	ABS Stud Piloted RH/Cast Brake Drum	1.89"	32	02-00027
10-00112-104	ABS Stud Piloted LH/Cast Brake Drum	1.89"	32	20-00028
10-00112-105	ABS Stud Piloted RH/Fused Drum	1.63"	32	02-00031
10-00112-106	ABS Stud Piloted LH/Fused Drum	1.63"	32	20-00032



Part Number	Application	Standout	Lbs.	Bolts
Dura-Light Hubs® Evolution™ for P Straight-Spindle Axles with 16.5 x 7" Cast Brake Drum				
1003112-031043*	Hub/Cast Drum Assy,HP,AL Whl	3.30"	145	02-00118
1003112-032043*	Hub/Cast Drum Assy,HP,ST Whl	2.54"	143	02-00110
1006112-033043	Hub/Cast Drum Assy,SP,RH	1.47"	141	02-00027
1007112-034043	Hub/Cast Drum Assy, SP,LH	1.47"	141	20-00028
1003112-131043*	ABS Hub/Cast Drum Assy,HP,Al Whl	3.30"	145	02-00118
1003112-132043*	ABS Hub/Cast Drum Assy,HP,St Whl	2.54"	144	02-00110
1006112-133043	ABS Hub/Cast Drum Assy,SP,RH	1.47"	141	02-00027
1007112-134043	ABS Hub/Cast Drum Assy,SP,LH	1.47"	141	20-00028

* Includes two flanged wheel nuts



P Bearings				
HM518410	bearing cup - outer bore			
HM518410	bearing cup - inner bore			
HM518445	bearing cone - outer bore			
HM518445	bearing cone - inner bore			

Drums				
03-00043	16.5 x 7" Cast Brake Drum	108 lbs		
89996B	16.5 x 7" Centrifuse® Brake Drum	90 lbs		
13-00060	16.5 x 8.62" Bal. Cast Brake Drum	122 lbs		

Component Parts				
02-39702	Metform - Two-piece, Flanged Wheel Nut,M22x1.5		.4 lbs	
SAE J1926	9/16-18 Fill Plug - Magnetic		-	
05-00037	Tone Ring - 100 Teeth, 6.77 Dia. Pitch Circle		.7 lbs	

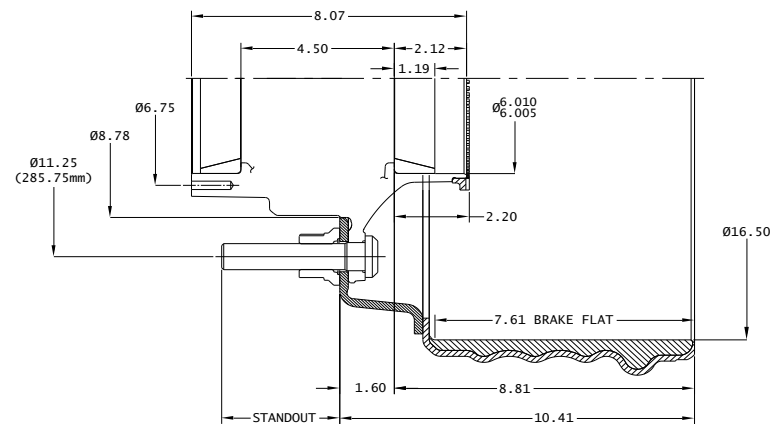
Hub Dynamic Load Ratings	
Single Wheel Offset	Load/Hub
0	12,500 lbs
0.56"	12,043 lbs
2.00"	11,000 lbs
2.38"	10,765 lbs
2.75"	10,538 lbs
3.50"	10,105 lbs
3.88"	9,899 lbs
6.66"	Prohibited

Estimated Lubricant Fill Volumes**	
33.50 fl-oz	Oil Lubrication Fill Level
139.20 cubic inches	Vol. Between Cup Seats Including Spindle Displacement
41.6 fl-oz	50% Fill Level for Semi-Fluid, Including Spindle Displacement

** Actual lubricant volume should be adjusted for specific components used. See TMC RP 631B

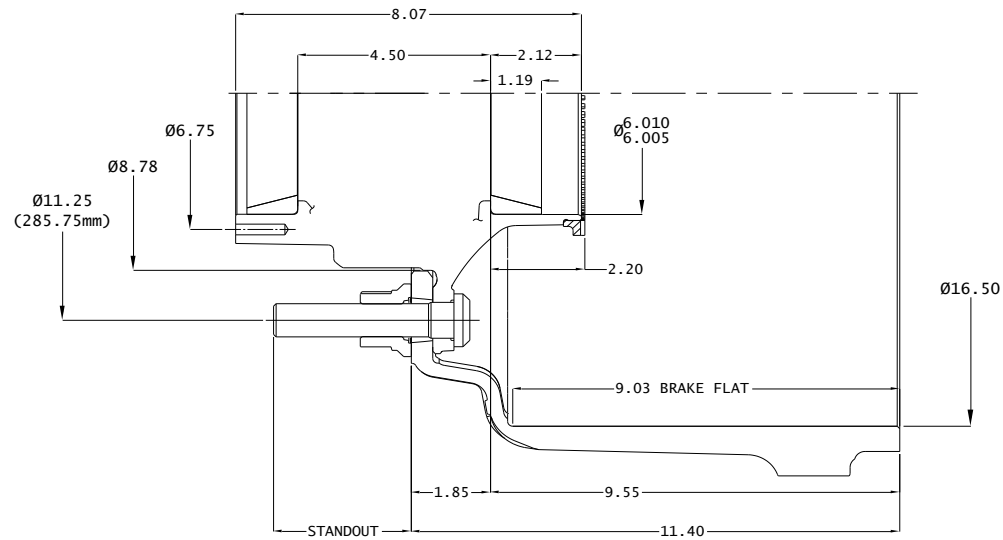
Dura-Light Hubs® Evolution™ for P Straight-Spindle Axles with 16.5 x 7" Centrifuse®				
1003112-041095*	Hub/Fused Drum Assy,HP,AL Whl	3.47"	126	02-00118
1003112-042095*	Hub/Fused Drum Assy,HP,ST Whl	2.71"	125	02-00110
1006112-045095	Hub/Fused Drum Assy,SP,RH	1.39"	122	02-00031
1007112-046095	Hub/Fused Drum Assy,SP,LH	1.39"	122	20-00032
1003112-141095*	ABS Hub/Fused Drum Assy,HP,AL Whl	3.47"	127	02-00118
1003112-142095*	ABS Hub/Fused Drum Assy,HP,ST Whl	2.71"	126	02-00110
1006112-145095	ABS Hub/Fused Drum Assy,SP,RH	1.39"	123	02-00031
1007112-146095	ABS Hub/Fused Drum Assy,SP,LH	1.39"	123	20-00032

* Includes two flanged wheel nuts



Part Number	Application	Standout	Lbs.	Bolts
Dura-Light Hubs® Evolution™ for P Straight-Spindle Axles with 16.5 x 8.62" Cast Brake Drum				
1003112-021060*	Hub/Bal Drum Assy,HP,AL Whl	3.22"	157	02-00118
1003112-022060*	Hub/Bal Drum Assy,HP,ST Whl	2.46"	157	02-00110
1006112-023060	Hub/Bal Drum Assy,SP,RH	1.34"	153	02-00027
1007112-024060	Hub/Bal Drum Assy, SP,LH	1.34"	153	20-00028
1003112-121060* ABS	Hub/Bal Drum Assy,HP,Al Whl	3.22"	158	02-00118
1003112-122060* ABS	Hub/Bal Drum Assy,HP,St Whl	2.46"	158	02-00110
1006112-123060 ABS	Hub/Bal Drum Assy,SP,RH	1.34"	154	02-00027
1007112-124060 ABS	Hub/Bal Drum Assy,SP,LH	1.34"	154	20-00028

* Includes two flanged wheel nuts





Easy-Roll™ Hub Assemblies



ALWAYS...

**MADE IN
THE USA!**

Phone: 937.743.8125 x 600
www.waltheremc.com

Part Number	Application	Standout Lbs.	Bolts
Easy-Roll™ Hubs for N Tapered-Spindle Axles with Fill Plug			
10-00106M-001	Hub Piloted/Aluminum Dual Wheel	3.96"	44 02-00045
10-00106M-002	Hub Piloted/Steel Dual Wheel	3.03"	42 02-00044
10-00106M-003	Stud Piloted RH/Cast Brake Drum	1.88"	39 02-00057
10-00106M-004	Stud Piloted LH/Cast Brake Drum	1.88"	39 20-00058
10-00106M-005	Stud Piloted RH/Fused Brake Drum	1.63"	39 02-00061
10-00106M-006	Stud Piloted LH/Fused Brake Drum	1.63"	39 20-00062
10-00106M-101	ABS Hub Piloted/Aluminum Dual Wheel	3.96"	45 02-00045
10-00106M-102	ABS Hub Piloted/Steel Dual Wheel	3.03"	42 02-00044
10-00106M-103	ABS Stud Piloted RH/Cast Brake Drum	1.88"	40 02-00057
10-00106M-104	ABS Stud Piloted LH/Cast Brake Drum	1.88"	40 20-00058
10-00106M-105	ABS Stud Piloted RH/Fused Brake Drum	1.63"	40 02-00061
10-00106M-106	ABS Stud Piloted LH/Fused Brake Drum	1.63"	40 20-00062

Part Number	Application	Standout Lbs.	Bolts
Easy-Roll™ Hubs for N Tapered-Spindle Axles with 16.5 x 7" Cast Drum with Fill Plug			
1003106M-031043*	Hub/Cast Drum Assy,HP,AL Whl	3.54"	153 02-00045
1003106M-032043*	Hub/Cast Drum Assy,HP,ST Whl	2.61"	151 02-00044
1006106M-033043	Hub/Cast Drum Assy,SP,RH	1.46"	148 02-00057
1007106M-034043	Hub/Cast Drum Assy,SP,LH	1.46"	148 20-00058
1003106M-131043*	ABS Hub/Cast Drum Assy,HP,AL Whl	3.54"	154 02-00045
1003106M-132043*	ABS Hub/Cast Drum Assy,HP,ST Whl	2.61"	152 02-00044
1006106M-133043	ABS Hub/Cast Drum Assy,SP,RH	1.46"	149 02-00057
1007106M-134043	ABS Hub/Cast Drum Assy,SP,LH	1.46"	149 20-00058

* Includes two flanged wheel nuts

N Bearings			
HM212011	bearing cup - outer bore		
HM218210	bearing cup - inner bore		
HM212049	bearing cone - outer bore		
HM218248	bearing cone - inner bore		

Drums			
03-00043	16.5 x 7" Cast Brake Drum	108 lbs	
89996B	16.5 x 7" Centrifuse® Brake Drum	90 lbs	

Component Parts			
02-39702	Metform - Two-piece, Flanged Wheel Nut,M22x1.5	.4 lbs	
05-00046	Tone Ring- 100 Teeth, 6.77 Dia Pitch Circle	.9 lbs.	
02-00166	9/16-18 Fill Plug - Magnetic	Torque 16-19 LB-FT	

Part Number	Application	Standout Lbs.	Bolts
Easy-Roll™ Hubs for N Tapered-Spindle Axles with 16.5 x 7" Centrifuse® with Fill Plug			
1003106M-041095*	Hub/Fused Drum Assy,HP,AL Whl	3.71"	135 02-00045
1003106M-042095*	Hub/Fused Drum Assy,HP,ST Whl	2.78"	133 02-00044
1006106M-045095	Hub/Fused Drum Assy,SP, RH	1.38"	129 02-00061
1007106M-046095	Hub/Fused Drum Assy, SP,LH	1.38"	129 20-00062
1003106M-141095*	ABS Hub/Fused Drum Assy,HP,AL Whl	3.71"	136 02-00045
1003106M-142095*	ABS Hub/Fused Drum Assy,HP,ST Whl	2.78"	134 02-00044
1006106M-145095	ABS Hub/Fused Drum Assy,SP,RH	1.38"	130 02-00061
1007106M-146095	ABS Hub/Fused Drum Assy,SP,LH	1.38"	130 20-00062

* Includes two flanged wheel nuts

Hub Dynamic Load Ratings	
Single Wheel Offset	Load/Hub
0	11,250 lbs
0.56"	10,839 lbs
2.00"	10,000 lbs
2.38"	9,689 lbs
2.75"	9,484 lbs
3.50"	9,095 lbs
3.88"	8,910 lbs
6.66"	Prohibited

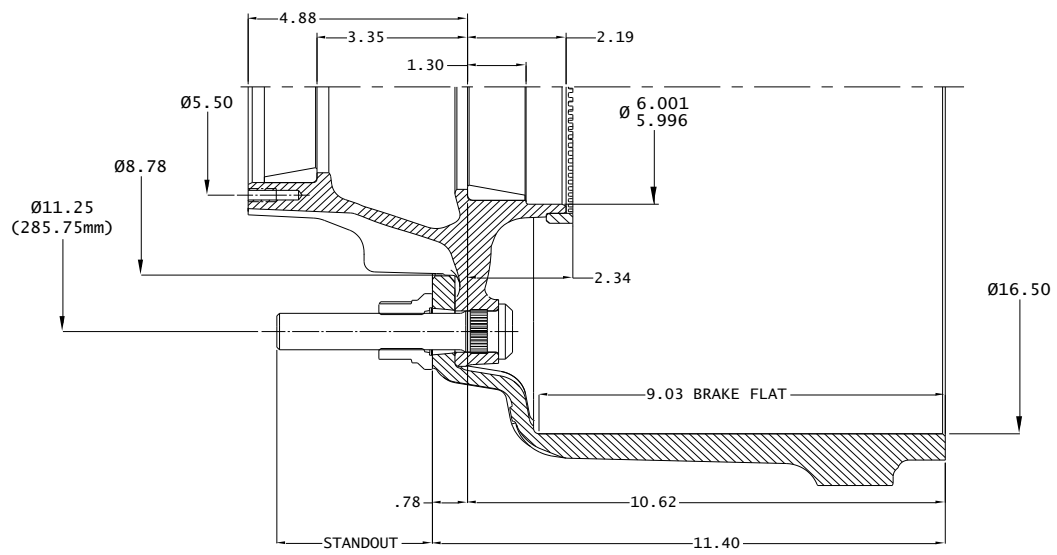
Estimated Lubricant Fill Volumes**	
20.88 fl-oz	Oil Lubrication Fill Level
94.65 in ³	Vol. Between Cup Seats Including Spindle Displacement
26.22 fl-oz	50% Fill Level for Semi-Fluid, Including Spindle Displacement

** Actual lubricant volume should be adjusted for specific components used. See TMC RP 631B

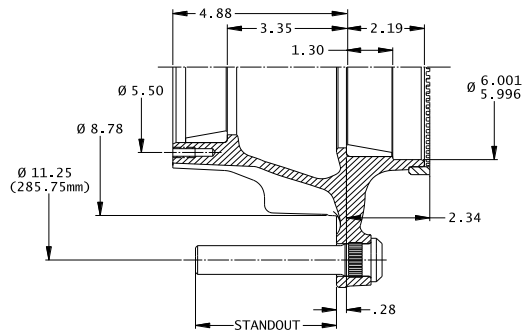
* Includes two flanged wheel nuts

Part Number	Application	Standout	Lbs.	Bolts
Easy Roll™ Hubs for N Tapered-Spindle Axles with 16.5 x 8.62" Cast Brake Drum with Fill Plug				
1003106M-021060*	Hub/Bal Drum Assy,HP,AL Whl	3.46"	166	02-00045
1003106M-022060*	Hub/Bal Drum Assy,HP,ST Whl	2.53"	164	02-00044
1006106M-023060	Hub/Bal Drum Assy,SP,RH	1.38"	161	02-00057
1007106M-024060	Hub/Bal Drum Assy, SP,LH	1.38"	161	20-00058
1003106M-121060* ABS	Hub/Bal Drum Assy,HP,Al Whl	3.46"	167	02-00045
1003106M-122060* ABS	Hub/Bal Drum Assy,HP,St Whl	2.53"	164	02-00044
1006106M-123060 ABS	Hub/Bal Drum Assy,SP,RH	1.38"	162	02-00057
1007106M-124060 ABS	Hub/Bal Drum Assy,SP,LH	1.38"	162	20-00058

* Includes two flanged wheel nuts

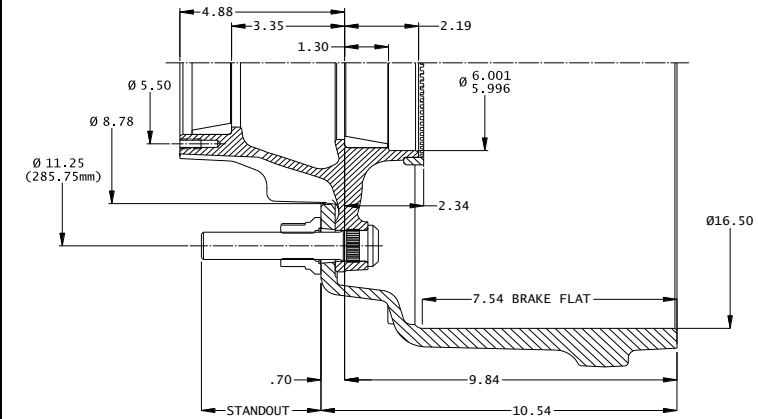


Part Number	Application	Standout	Lbs.	Bolts
Easy-Roll™ Hubs for N Tapered-Spindle Axles				
10-00106-001	Hub Piloted/Aluminum Dual Wheel	3.96"	44	02-00045
10-00106-002	Hub Piloted/Steel Dual Wheel	3.03"	42	02-00044
10-00106-003	Stud Piloted RH/Cast Brake Drum	1.88"	39	02-00057
10-00106-004	Stud Piloted LH/Cast Brake Drum	1.88"	39	20-00058
10-00106-005	Stud Piloted RH/Fused Brake Drum	1.63"	39	02-00061
10-00106-006	Stud Piloted LH/Fused Brake Drum	1.63"	39	20-00062
10-00106-101	ABS Hub Piloted/Aluminum Dual Wheel	3.96"	45	02-00045
10-00106-102	ABS Hub Piloted/Steel Dual Wheel	3.03"	42	02-00044
10-00106-103	ABS Stud Piloted RH/Cast Brake Drum	1.88"	40	02-00057
10-00106-104	ABS Stud Piloted LH/Cast Brake Drum	1.88"	40	20-00058
10-00106-105	ABS Stud Piloted RH/Fused Brake Drum	1.63"	40	02-00061
10-00106-106	ABS Stud Piloted LH/Fused Brake Drum	1.63"	40	20-00062



Part Number	Application	Standout	Lbs.	Bolts
Easy-Roll™ Hubs for N Tapered-Spindle Axles with 16.5 x 7" Cast Drum				
1003106-031043*	Hub/Cast Drum Assy,HP,AL Whl	3.54"	153	02-00045
1003106-032043*	Hub/Cast Drum Assy,HP,ST Whl	2.61"	151	02-00044
1006106-033043	Hub/Cast Drum Assy,SP,RH	1.46"	148	02-00057
1007106-034043	Hub/Cast Drum Assy,SP,LH	1.46"	148	20-00058
1003106-131043*	ABS Hub/Cast Drum Assy,HP,AL Whl	3.54"	154	02-00045
1003106-132043*	ABS Hub/Cast Drum Assy,HP,ST Whl	2.61"	152	02-00044
1006106-133043	ABS Hub/Cast Drum Assy,SP,RH	1.46"	149	02-00057
1007106-134043	ABS Hub/Cast Drum Assy,SP,LH	1.46"	149	20-00058

* Includes two flanged wheel nuts



N Bearings				
HM212011	bearing cup - outer bore			
HM218210	bearing cup - inner bore			
HM212049	bearing cone - outer bore			
HM218248	bearing cone - inner bore			

Drums				
03-00043	16.5 x 7" Cast Brake Drum	108 lbs		
89996B	16.5 x 7" Centrifuse® Brake Drum	90 lbs		

Component Parts				
02-39702	Metform - Two-piece, Flanged Wheel Nut,M22x1.5	.4 lbs		
05-00046	Tone Ring- 100 Teeth, 6.77 Dia Pitch Circle	.9 lbs.		

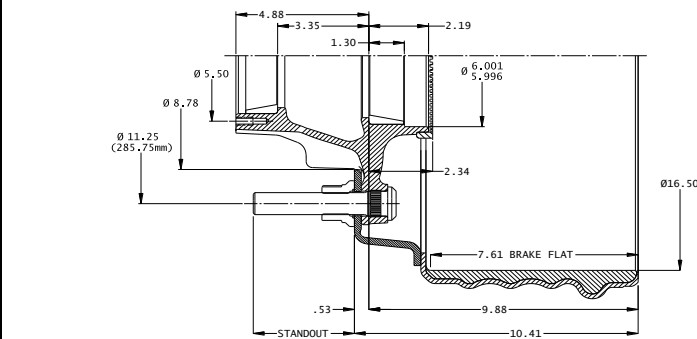
Hub Dynamic Load Ratings	
Single Wheel Offset	Load/Hub
0	11,250 lbs
0.56"	10,839 lbs
2.00"	10,000 lbs
2.38"	9,689 lbs
2.75"	9,484 lbs
3.50"	9,095 lbs
3.88"	8,910 lbs
6.66"	Prohibited

Estimated Lubricant Fill Volumes**	
20.88 fl-oz	Oil Lubrication Fill Level
94.65 in³	Vol. Between Cup Seats Including Spindle Displacement
26.22 fl-oz	50% Fill Level for Semi-Fluid, Including Spindle Displacement

** Actual lubricant volume should be adjusted for specific components used. See TMC RP 631B

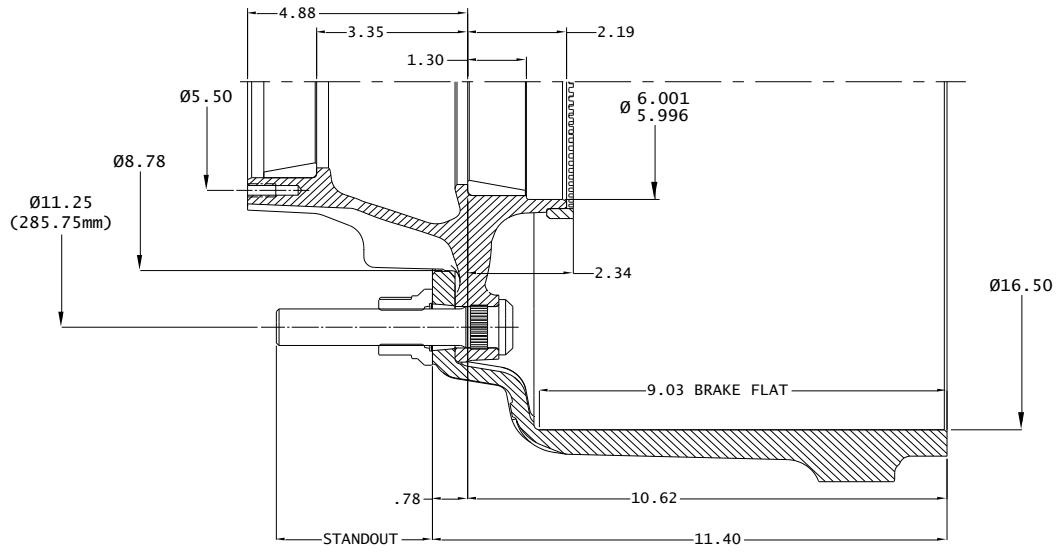
Part Number	Application	Standout	Lbs.	Bolts
Easy-Roll™ Hubs for N Tapered-Spindle Axles with 16.5 x 7" Centrifuse®				
1003106-041095*	Hub/Fused Drum Assy,HP,AL Whl	3.71"	135	02-00045
1003106-042095*	Hub/Fused Drum Assy,HP,ST Whl	2.78"	133	02-00044
1006106-045095	Hub/Fused Drum Assy,SP, RH	1.38"	129	02-00061
1007106-046095	Hub/Fused Drum Assy, SP,LH	1.38"	129	20-00062
1003106-141095*	ABS Hub/Fused Drum Assy,HP,AL Whl	3.71"	136	02-00045
1003106-142095*	ABS Hub/Fused Drum Assy,HP,ST Whl	2.78"	134	02-00044
1006106-145095	ABS Hub/Fused Drum Assy,SP,RH	1.38"	130	02-00061
1007106-146095	ABS Hub/Fused Drum Assy,SP,LH	1.38"	130	20-00062

* Includes two flanged wheel nuts

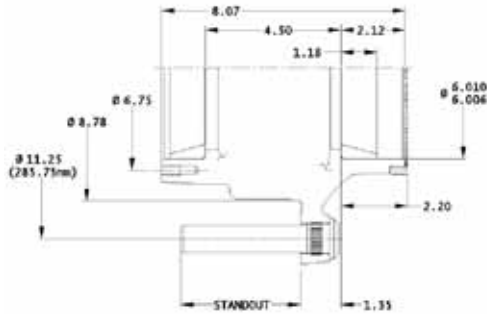


Part Number	Application	Standout	Lbs.	Bolts
Easy Roll™ Hubs for N Tapered-Spindle Axles with 16.5 x 8.62" Cast Brake Drum				
1003106-021060*	Hub/Bal Drum Assy,HP,AL Whl	3.46"	166	02-00045
1003106-022060*	Hub/Bal Drum Assy,HP,ST Whl	2.53"	164	02-00044
1006106-023060	Hub/Bal Drum Assy,SP,RH	1.38"	161	02-00057
1007106-024060	Hub/Bal Drum Assy, SP,LH	1.38"	161	20-00058
1003106-121060* ABS	Hub/Bal Drum Assy,HP,Al Whl	3.46"	167	02-00045
1003106-122060* ABS	Hub/Bal Drum Assy,HP,St Whl	2.53"	164	02-00044
1006106-123060 ABS	Hub/Bal Drum Assy,SP,RH	1.38"	162	02-00057
1007106-124060 ABS	Hub/Bal Drum Assy,SP,LH	1.38"	162	20-00058

* Includes two flanged wheel nuts



Part Number	Application	Standout	Lbs.	Bolts
Easy-Roll™ Hubs for P Straight-Spindle Axles with Fill Plug				
10-00161M-001	Hub Piloted/Aluminum Dual Wheel	3.96"	47	02-00045
10-00161M-002	Hub Piloted/Steel Dual Wheel	3.03"	45	02-00044
10-00161M-003	Stud Piloted RH/Cast Brake Drum	1.88"	42	02-00057
10-00161M-004	Stud Piloted LH/Cast Brake Drum	1.88"	42	20-00058
10-00161M-005	Stud Piloted RH/Fused Brake Drum	1.63"	42	02-00061
10-00161M-006	Stud Piloted LH/Fused Brake Drum	1.63"	42	20-00062
10-00161M-101	ABS Hub Piloted/Aluminum Dual Wheel	3.96"	47	02-00045
10-00161M-102	ABS Hub Piloted/Steel Dual Wheel	3.03"	46	02-00044
10-00161M-103	ABS Stud Piloted RH/Cast Brake Drum	1.88"	43	02-00057
10-00161M-104	ABS Stud Piloted LH/Cast Brake Drum	1.88"	43	20-00058
10-00161M-105	ABS Stud Piloted RH/Fused Brake Drum	1.63"	43	02-00061
10-00161M-106	ABS Stud Piloted LH/Fused Brake Drum	1.63"	43	20-00062



P Bearings	
HM518410	bearing cup - outer bore
HM518410	bearing cup - inner bore
HM518445	bearing cone

Drums		
03-00043	16.5 x 7" Cast Brake Drum	108 lbs
89996B	16.5 x 7" Centrifuse® Brake Drum	90 lbs
13-00060	16.5 x 8.62" Balanced Brake Drum	122 lbs

Component Parts		
02-39702	Metform - Two-piece, Flanged Wheel Nut, M22x1.5	.4 lbs
05-00046	Tone Ring - 100 Teeth, 6.77 Dia. Pitch Circle	.9 lbs
02-00166	9/16-18 Fill Plug - Magnetic	Torque 16-19 LB-FT

Hub Dynamic Load Ratings

Single Wheel Offset	Load/Hub
0	12,500 lbs
0.56"	12,043 lbs
2.00"	11,000 lbs
2.38"	10,765 lbs
2.75"	10,538 lbs
3.50"	10,105 lbs
3.88"	9,899 lbs
6.66"	7,300 lbs

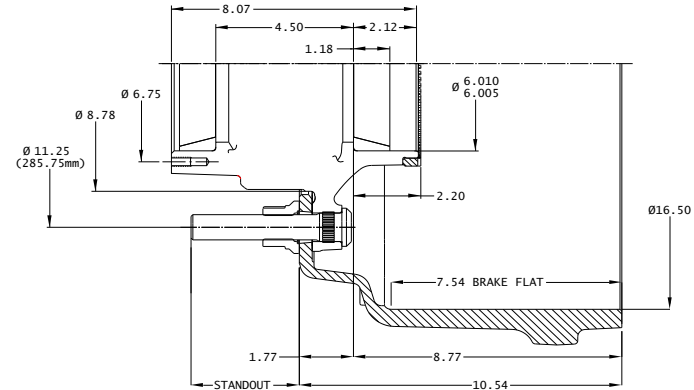
Estimated Lubricant Fill Volumes**

30.8 fl-oz	Oil Lubrication Fill Level
129.3 in ³	Vol. Between Cup Seats Including Spindle Displacement
35.8 fl-oz	50% Fill Level for Semi-Fluid, Including Spindle Displacement

** Actual lubricant volume should be adjusted for specific components used. See TMC RP 631B

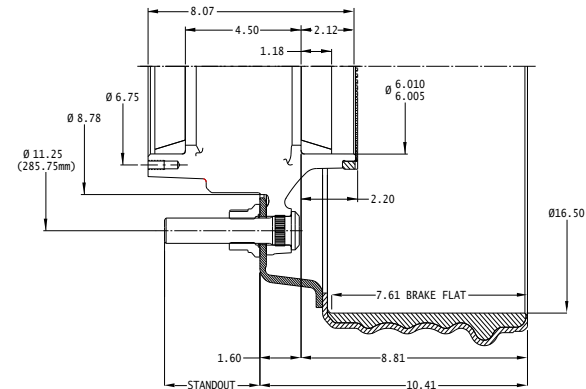
Part Number	Application	Standout	Lbs.	Bolts
Easy-Roll™ Hubs for P Straight-Spindle Axles with 16.5 x 7" Cast Drum with Fill Plug				
1003161M-031043*	Hub/Cast Drum Assy, HP, AL Whl	3.54"	156	02-00045
1003161M-032043*	Hub/Cast Drum Assy, HP, ST Whl	2.61"	155	02-00044
1006161M-033043	Hub/Cast Drum Assy, SP, RH	1.46"	151	02-00057
1007161M-034043	Hub/Cast Drum Assy, SP, LH	1.46"	151	20-00058
1003161M-131043*	ABS Hub/Cast Drum Assy, HP, AL Whl	3.54"	157	02-00045
1003161M-132043*	ABS Hub/Cast Drum Assy, HP, ST Whl	2.61"	155	02-00044
1006161M-133043	ABS Hub/Cast Drum Assy, SP, RH	1.46"	152	02-00057
1007161M-134043	ABS Hub/Cast Drum Assy, SP, LH	1.46"	152	20-00058

* Includes two flanged wheel nuts



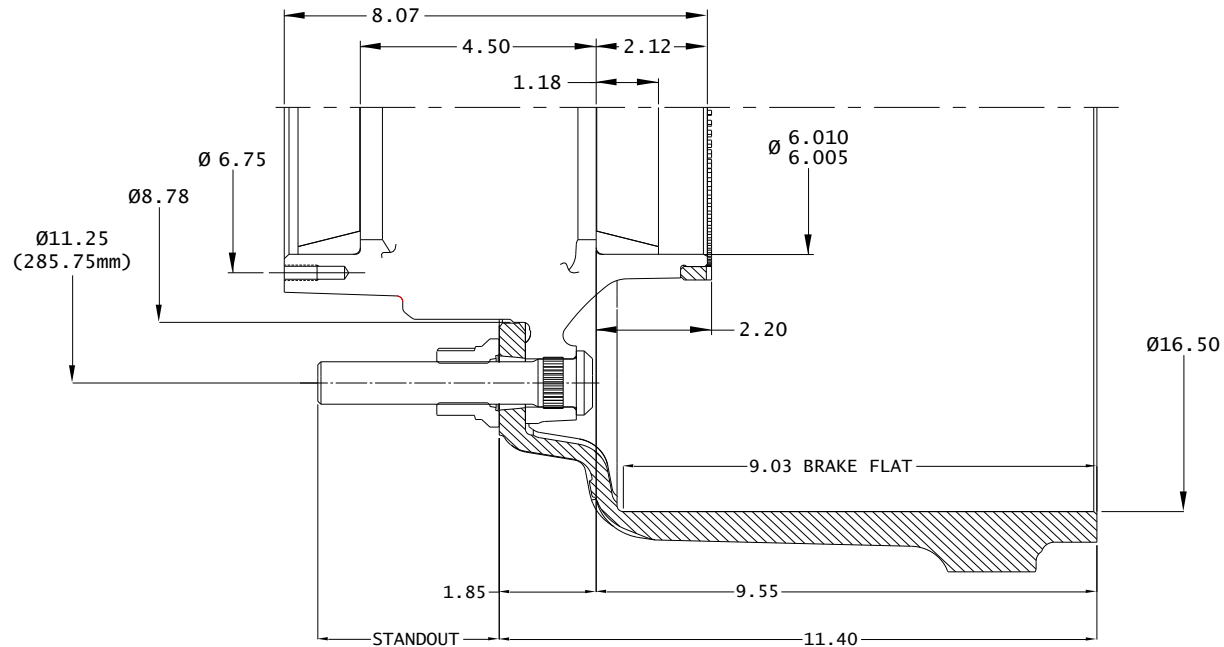
Part Number	Application	Standout	Lbs.	Bolts
Easy-Roll™ Hubs for P Straight-Spindle Axles with 16.5 x 7" Centrifuse® with Fill Plug				
1003161M-041095*	Hub/Fused Drum Assy, HP, AL Whl	3.71"	138	02-00045
1003161M-042095*	Hub/Fused Drum Assy, HP, ST Whl	2.78"	136	02-00044
1006161M-045095	Hub/Fused Drum Assy, SP, RH	1.38"	133	02-00061
1007161M-046095	Hub/Fused Drum Assy, SP, LH	1.38"	133	20-00062
1003161M-141095*	ABS Hub/Fused Drum Assy, HP, AL Whl	3.71"	139	02-00045
1003161M-142095*	ABS Hub/Fused Drum Assy, HP, ST Whl	2.78"	137	02-00044
1006161M-145095	ABS Hub/Fused Drum Assy, SP, RH	1.38"	134	02-00061
1007161M-146095	ABS Hub/Fused Drum Assy, SP, LH	1.38"	134	20-00062

* Includes two flanged wheel nuts

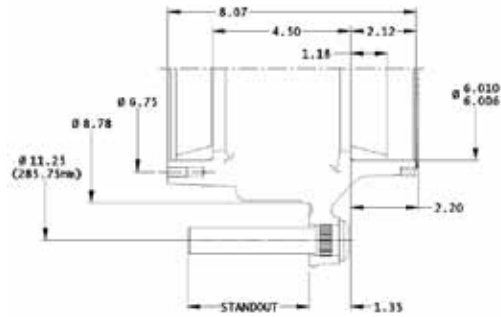


Part Number	Application	Standout	Lbs.	Bolts
Easy Roll™ Hubs for P Straight-Spindle Axles with 16.5 x 8.62" Cast Brake Drum with Fill Plug				
1003161M-021060*	Hub/Bal Drum Assy,HP,AL Whl	3.46"	169	02-00045
1003161M-022060*	Hub/Bal Drum Assy,HP,ST Whl	2.53"	167	02-00044
1006161M-023060	Hub/Bal Drum Assy,SP,RH	1.38"	164	02-00057
1007161M-024060	Hub/Bal Drum Assy, SP,LH	1.38"	164	20-00058
1003161M-121060* ABS	Hub/Bal Drum Assy,HP,Al Whl	3.46"	170	02-00045
1003161M-122060* ABS	Hub/Bal Drum Assy,HP,St Whl	2.53"	168	02-00044
1006161M-123060 ABS	Hub/Bal Drum Assy,SP,RH	1.38"	165	02-00057
1007161M-124060 ABS	Hub/Bal Drum Assy,SP,LH	1.38"	165	20-00058

* Includes two flanged wheel nuts

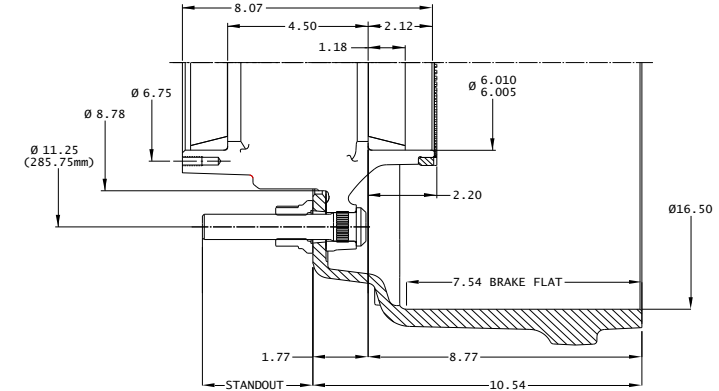


Part Number	Application	Standout	Lbs.	Bolts
Easy-Roll™ Hubs for P Straight-Spindle Axles				
10-00161-001	Hub Piloted/Aluminum Dual Wheel	3.96"	47	02-00045
10-00161-002	Hub Piloted/Steel Dual Wheel	3.03"	45	02-00044
10-00161-003	Stud Piloted RH/Cast Brake Drum	1.88"	42	02-00057
10-00161-004	Stud Piloted LH/Cast Brake Drum	1.88"	42	20-00058
10-00161-005	Stud Piloted RH/Fused Brake Drum	1.63"	42	02-00061
10-00161-006	Stud Piloted LH/Fused Brake Drum	1.63"	42	20-00062
10-00161-101	ABS Hub Piloted/Aluminum Dual Wheel	3.96"	47	02-00045
10-00161-102	ABS Hub Piloted/Steel Dual Wheel	3.03"	46	02-00044
10-00161-103	ABS Stud Piloted RH/Cast Brake Drum	1.88"	43	02-00057
10-00161-104	ABS Stud Piloted LH/Cast Brake Drum	1.88"	43	20-00058
10-00161-105	ABS Stud Piloted RH/Fused Brake Drum	1.63"	43	02-00061
10-00161-106	ABS Stud Piloted LH/Fused Brake Drum	1.63"	43	20-00062



Part Number	Application	Standout	Lbs.	Bolts
Easy-Roll™ Hubs for P Straight-Spindle Axles with 16.5 x 7" Cast Drum				
1003161-031043*	Hub/Cast Drum Assy,HP,AL Whl	3.54"	156	02-00045
1003161-032043*	Hub/Cast Drum Assy,HP,ST Whl	2.61"	155	02-00044
1006161-033043	Hub/Cast Drum Assy, SP, RH	1.46"	151	02-00057
1007161-034043	Hub/Cast Drum Assy, SP, LH	1.46"	151	20-00058
1003161-131043*	ABS Hub/Cast Drum Assy,HP,AL Whl	3.54"	157	02-00045
1003161-132043*	ABS Hub/Cast Drum Assy,HP,ST Whl	2.61"	155	02-00044
1006161-133043	ABS Hub/Cast Drum Assy, SP, RH	1.46"	152	02-00057
1007161-134043	ABS Hub/Cast Drum Assy, SP, LH	1.46"	152	20-00058

* Includes two flanged wheel nuts



P Bearings	
HM518410	bearing cup - outer bore
HM518410	bearing cup - inner bore
HM518445	bearing cone

Drums		
03-00043	16.5 x 7" Cast Brake Drum	108 lbs
89996B	16.5 x 7" Centrifuse® Brake Drum	90 lbs
13-00060	16.5 x 8.62" Balanced Brake Drum	122 lbs

Component Parts		
02-39702	Metform - Two-piece, Flanged Wheel Nut,M22x1.5	.4 lbs
05-00046	Tone Ring - 100 Teeth, 6.77 Dia. Pitch Circle	.9 lbs

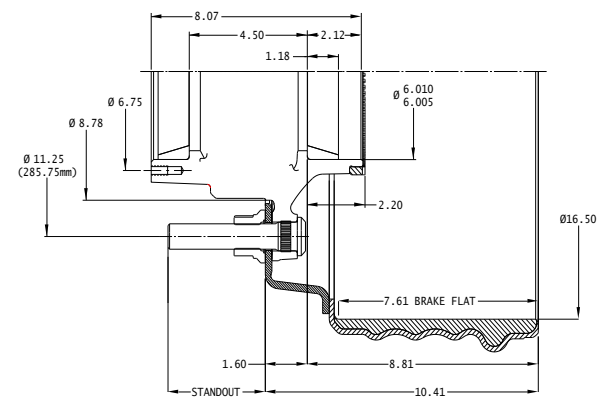
Hub Dynamic Load Ratings	
Single Wheel Offset	Load/Hub
0	12,500 lbs
0.56"	12,043 lbs
2.00"	11,000 lbs
2.38"	10,765 lbs
2.75"	10,538 lbs
3.50"	10,105 lbs
3.88"	9,899 lbs
6.66"	7,300 lbs

Estimated Lubricant Fill Volumes**	
30.8 fl-oz	Oil Lubrication Fill Level
129.3 in³	Vol. Between Cup Seats Including Spindle Displacement
35.8 fl-oz	50% Fill Level for Semi-Fluid, Including Spindle Displacement

** Actual lubricant volume should be adjusted for specific components used. See TMC RP 631B

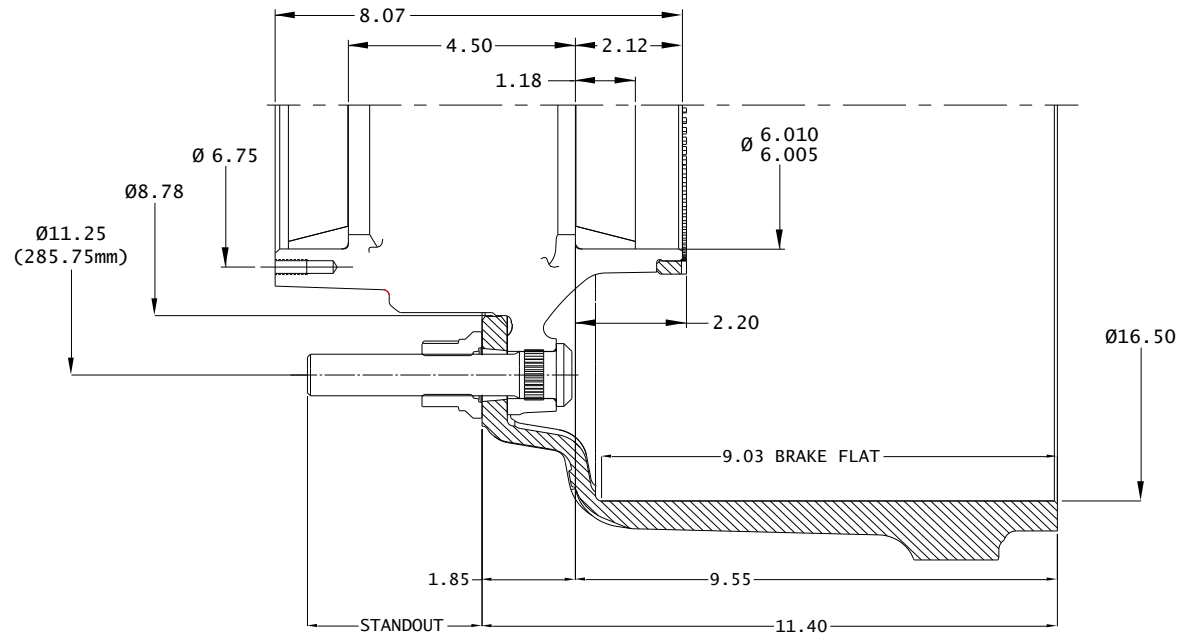
Easy-Roll™ Hubs for P Straight-Spindle Axles with 16.5 x 7" Centrifuse®				
1003161-041095*	Hub/Fused Drum Assy,HP,AL Whl	3.71"	138	02-00045
1003161-042095*	Hub/Fused Drum Assy,HP,ST Whl	2.78"	136	02-00044
1006161-045095	Hub/Fused Drum Assy,SP, RH	1.38"	133	02-00061
1007161-046095	Hub/Fused Drum Assy, SP,LH	1.38"	133	20-00062
1003161-141095*	ABS Hub/Fused Drum Assy,HP,AL Whl	3.71"	139	02-00045
1003161-142095*	ABS Hub/Fused Drum Assy,HP,ST Whl	2.78"	137	02-00044
1006161-145095	ABS Hub/Fused Drum Assy,SP,RH	1.38"	134	02-00061
1007161-146095	ABS Hub/Fused Drum Assy,SP,LH	1.38"	134	20-00062

* Includes two flanged wheel nuts

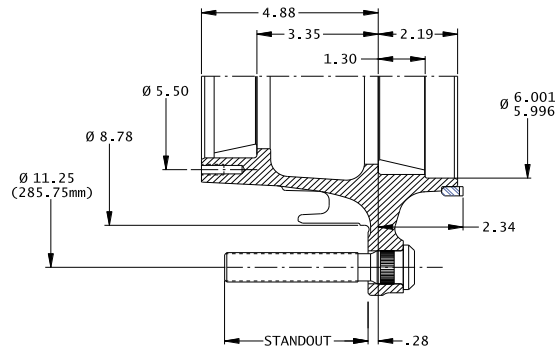


Part Number	Application	Standout	Lbs.	Bolts
Easy Roll™ Hubs for P Straight-Spindle Axles with 16.5 x 8.62" Cast Brake Drum				
1003161-021060*	Hub/Bal Drum Assy,HP,AL Whl	3.46"	169	02-00045
1003161-022060*	Hub/Bal Drum Assy,HP,ST Whl	2.53"	167	02-00044
1006161-023060	Hub/Bal Drum Assy,SP,RH	1.38"	164	02-00057
1007161-024060	Hub/Bal Drum Assy, SP,LH	1.38"	164	20-00058
1003161-121060* ABS	Hub/Bal Drum Assy,HP,Al Whl	3.46"	170	02-00045
1003161-122060* ABS	Hub/Bal Drum Assy,HP,St Whl	2.53"	168	02-00044
1006161-123060 ABS	Hub/Bal Drum Assy,SP,RH	1.38"	165	02-00057
1007161-124060 ABS	Hub/Bal Drum Assy,SP,LH	1.38"	165	20-00058

* Includes two flanged wheel nuts

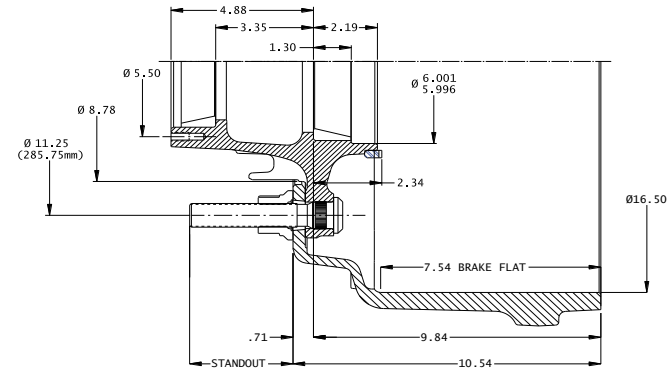


Part Number	Application	Standout	Lbs.	Bolts
Severe Duty Hubs for N Tapered-Spindle Axles				
10-00042-001	Hub Piloted/Aluminum Dual Wheel	3.96"	48	02-00045
10-00042-002	Hub Piloted/Steel Dual Wheel	3.03"	47	02-00044
10-00042-003	Stud Piloted RH/Cast Brake Drum	1.88"	44	02-00057
10-00042-004	Stud Piloted LH/Cast Brake Drum	1.88"	44	20-00058
10-00042-005	Stud Piloted RH/Fused Brake Drum	1.63"	44	02-00061
10-00042-006	Stud Piloted LH/Fused Brake Drum	1.63"	44	20-00062
10-00042-101	ABS Hub Piloted/Aluminum Dual Wheel	3.96"	49	02-00045
10-00042-102	ABS Hub Piloted/Steel Dual Wheel	3.03"	48	02-00044
10-00042-103	ABS Stud Piloted RH/Cast Brake Drum	1.88"	45	02-00057
10-00042-104	ABS Stud Piloted LH/Cast Brake Drum	1.88"	45	20-00058
10-00042-105	ABS Stud Piloted RH/Fused Brake Drum	1.63"	45	02-00061
10-00042-106	ABS Stud Piloted LH/Fused Brake Drum	1.63"	45	20-00062



Part Number	Application	Standout	Lbs.	Bolts
Severe Duty Hubs for N Tapered-Spindle Axles with 16.5 x 7" Cast Drum				
10-00042-031*	Hub/Cast Drum Assy,HP,AL Whl	3.54"	161	02-00045
10-00042-032*	Hub/Cast Drum Assy,HP,ST Whl	2.61"	160	02-00044
10-00042-033	Hub/Cast Drum Assy,SP,RH	1.46"	157	02-00057
10-00042-034	Hub/Cast Drum Assy,SP,LH	1.46"	157	20-00058
10-00042-131*	ABS Hub/Cast Drum Assy,HP,AL Whl	3.54"	162	02-00045
10-00042-132*	ABS Hub/Cast Drum Assy,HP,ST Whl	2.61"	161	02-00044
10-00042-133	ABS Hub/Cast Drum Assy,SP,RH	1.46"	158	02-00057
10-00042-134	ABS Hub/Cast Drum Assy,SP,LH	1.46"	158	20-00058

* Includes two flanged wheel nuts



N Bearings	
HM212011	bearing cup - outer bore
HM218210	bearing cup - inner bore
HM212049	bearing cone - outer bore
HM218248	bearing cone - inner bore

Drums		
03-00043	16.5 x 7" Cast Brake Drum	108 lbs
89996B	16.5 x 7" Centrifuse® Brake Drum	90 lbs

Component Parts		
02-39702	Metform - Two-piece, Flanged Wheel Nut,M22x1.5	.4 lbs
05-00046	Tone Ring - 100 Teeth, 6.77 Dia. Pitch Circle	.86 lbs

Hub Dynamic Load Ratings

Single Wheel Offset	Load/Hub
0	12,500 lbs
0.56"	12,043 lbs
2.00"	11,000 lbs
2.38"	10,765 lbs
2.75"	10,538 lbs
3.50"	10,105 lbs
3.88"	9,899 lbs
6.66"	7,300 lbs

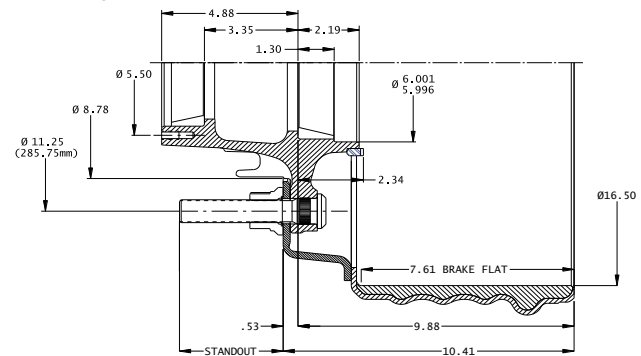
Estimated Lubricant Fill Volumes**

- 15 fl-oz** Oil Lubrication Fill Level
- 61.40 in³** Vol. Between Cup Seats Including Spindle Displacement
- 17.01 fl-oz** 50% Fill Level for Semi-Fluid, Including Spindle Displacement

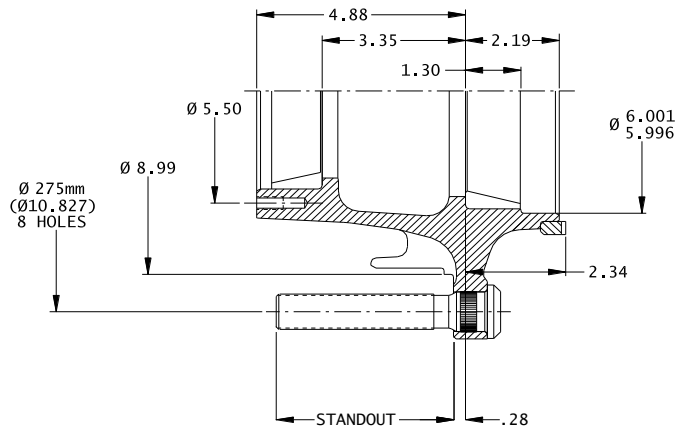
** Actual lubricant volume should be adjusted for specific components used. See TMC RP 631B

Severe Duty Hubs for N Tapered-Spindle Axles with 16.5 x 7" Centrifuse®				
10-00042-041*	Hub/Fused Drum Assy,HP,AL Whl	3.71"	139	02-00045
10-00042-042*	Hub/Fused Drum Assy,HP,ST Whl	2.78"	138	02-00044
10-00042-045	Hub/Fused Drum Assy,SP, RH	1.38"	135	02-00061
10-00042-046	Hub/Fused Drum Assy, SP,LH	1.38"	135	20-00062
10-00042-141*	ABS Hub/Fused Drum Assy,HP,AL Whl	3.71"	140	02-00045
10-00042-142*	ABS Hub/Fused Drum Assy,HP,ST Whl	2.78"	139	02-00044
10-00042-145	ABS Hub/Fused Drum Assy,SP,RH	1.38"	136	02-00061
10-00042-146	ABS Hub/Fused Drum Assy,SP,LH	1.38"	136	20-00062

* Includes two flanged wheel nuts

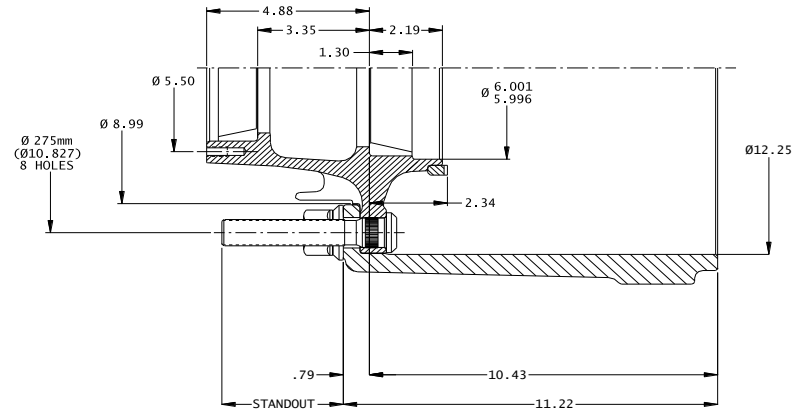


Part Number	Application	Standout	Lbs.	Bolts
Low-Boy Hubs for N Tapered-Spindle Axles				
10-00048-001	Hub HP, AL Whl	4.14"	40	02-00045
10-00048-002	Hub HP, ST Whl	3.21"	39	02-00044
10-00048-101	ABS Hub HP, AL Whl	4.14"	41	02-00045
10-00048-102	ABS Hub HP, ST Whl	3.21"	40	02-00044



Part Number	Application	Standout	Lbs.	Bolts
Low-Boy Hubs for N Tapered-Spindle Axles with 12 1/4 x 7.5" Cast Drum				
10-00048-031*	Hub/Cast Drum Assy. HP, AL Whl	3.64"	133	02-00045
10-00048-032*	Hub/Cast Drum Assy. HP, ST Whl	2.71"	132	02-00044
10-00048-131*	ABS Hub/Cast Drum Assy. HP, AL Whl	3.64"	134	02-00045
10-00048-132*	ABS Hub/Cast Drum Assy. HP, ST Whl	2.71"	133	02-00044

* Includes two flanged wheel nuts



NOTE: BRAKE SIZE 12.25" X 7.50"

Hub Dynamic Load Ratings

Single Wheel Offset	Load/Hub
0	10,000 lbs
0.56"	Prohibited
2.00"	Prohibited
2.38"	Prohibited
2.75"	Prohibited
3.50"	Prohibited
3.88"	Prohibited
6.66"	Prohibited

Component Parts

03-00050	12 1/4" x 7.5" Cast Brake Drum	93 lbs
02-39702	Metform - Two-piece, Flanged Wheel Nut, M22x1.5	.4 lbs
05-00080	Tone Ring - 80 Teeth, 6.77 Dia. Pitch Circle	

N Bearings

HM212011	bearing cup - outer bore
HM218210	bearing cup - inner bore
HM212049	bearing cone - outer bore
HM218248	bearing cone - inner bore

Estimated Lubricant Fill Volumes**

15 fl-oz	Oil Lubrication Fill Level
61.40 in ³	Vol. Between Cup Seats Including Spindle Displacement
17.01 fl-oz	50% Fill Level for Semi-Fluid, Including Spindle Displacement

** Actual lubricant volume should be adjusted for specific components used. See TMC RP 631B

Dura-Light Hub® and Drum Assemblies for Lift Axles



**Industry-Leading
Weight Savings of
50 Pounds per Axle!**

The Walther name has a long history in wheel-end products. Over 100 years ago, George Walther revolutionized the industry by developing the first steel wheels for trucks. Steel was a dramatic improvement over the existing iron and wood wheels.

Since that time, the Walther family has been a leader in the heavy duty wheel-end industry. Today, Walther EMC hubs and drums are available from virtually all major trailer and axle manufacturers.

Walther Engineering and Manufacturing Company has expanded its product line for lift axles with the release of a new Dura-Light Hub® and Drum Assembly. The assembly is designed to fit 13.5k FF spindled lift axles. This Dura-Light Hub® and Drum Assembly saves up to 50 pounds per axle as compared to traditional wheel ends and up to 18 lbs. per axle versus aluminum hubs with a steel shell drum.

Dura-Light Hubs provide unmatched durability and weight savings at a fraction of the cost of heavier and less durable aluminum hubs.

This industry-leading assembly rounds out Walther EMC's light-weight product offering for lift axles and trailers.

Features & Benefits for Dura-Light Hub® and Drum Assemblies for Lift Axles:

- Cast and machined in the **U.S.A.**
- Large weight savings versus competitive standard cast assemblies (FF assembly saves up to 50 pounds per axle!)
- Low initial cost per pound saved
- Superior durability versus aluminum hubs
- Ease of maintenance versus aluminum hubs
- Precision machined for vibration-free operation
- Rigorous quality controls to ensure product integrity
- Certified through third party testing to be Federal Motor Vehicle Safety Standard 121 (FMVSS-121) compliant
- Meets or exceeds OEM and SAE standards
- Walther EMC is a TS-16949 registered company



ALWAYS...

Made in America!

Walther EMC Part Number*	Spindle Type	WEMC Weight Savings per Axle**	Replaces these part numbers for lift axle application:		
			KIC Part Number	Webb Part Number	Motor Wheel Part Number
0101107-021098	FF	50	002-00137L	2520_RX4	91572BK
10-00011-031	N	38	001-00125L	2023_RK6	400122
10-00039-031	P	50	004-00143L	2343_RK6	400044

Above: The design of the new Dura-Light Hub & Drum Assembly for FF lift axles has been optimized using sophisticated design technologies and finite element analysis (FEA).

* Part numbers depicted are non-ABS with standouts for aluminum wheels and include two flange nuts. ABS, bolt, and nut options are available.

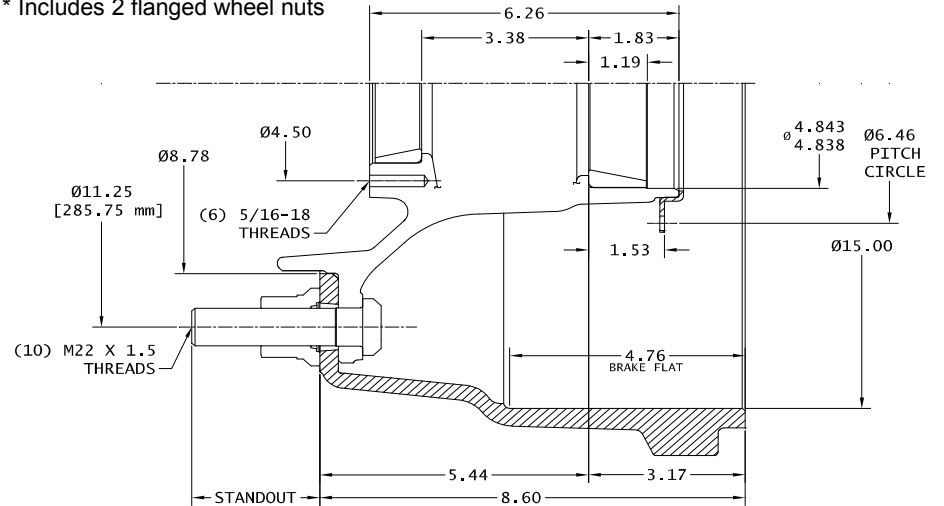
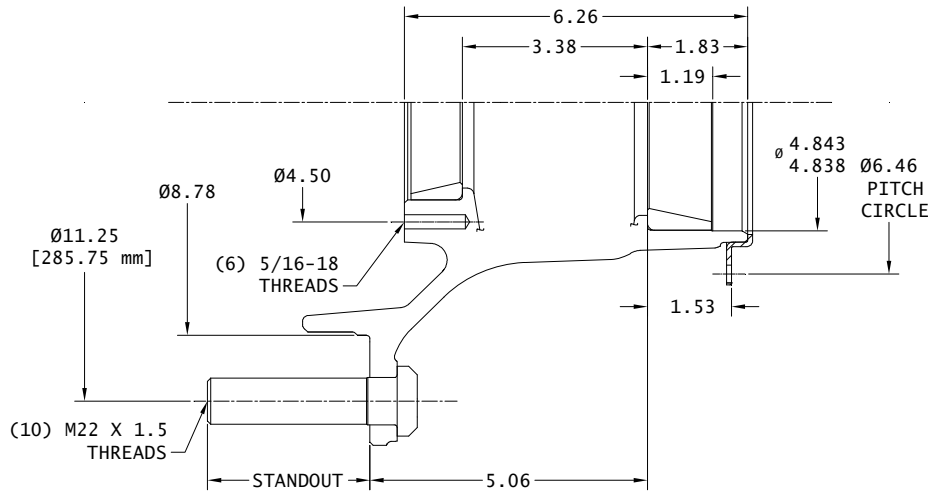
** Weight savings when compared to commonly used standard ductile iron hub and cast brake drum.



Walther Engineering & Manufacturing Company

Phone: 937.743.8125 x 600
www.waltheremc.com

Part Number	Application	Standout	Lbs.	Bolts	Part Number	Application	Standout	Lbs.	Bolts
Dura-Light-Hubs® FF Axle					Dura-Light Hubs® FF with 15 x 4" Cast Brake Drum "Lift Axle Only"				
01-00107-001	Hub Piloted/Aluminum Wheel	2.97"	29	02-00110	0103107-021098*	Hub/Cast Drum Assy,HP,AL Whl	2.59"	97	02-00110
01-00107-002	Hub Piloted/Steel Wheel	2.40"	28	02-00111	0103107-022098*	Hub/Cast Drum Assy,HP,ST Whl	2.03"	96	02-00111
01-00107-101	ABS Hub Piloted/Aluminum Wheel	2.97"	29	02-00110	0103107-121098*	ABS Hub/Cast Drum Assy,HP,AI Whl	2.59"	97	02-00110
01-00107-102	ABS Hub Piloted/Steel Wheel	2.40"	28	02-00111	0103107-122098*	ABS Hub/Cast Drum Assy,HP,St Whl	2.03"	96	02-00111



FF Bearings	
3720	bearing cup - outer bore
HM212011	bearing cup - inner bore
3782	bearing cone - outer bore
HM212049	bearing cone - inner bore

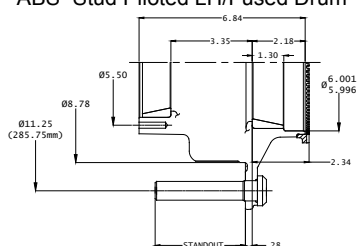
Drums		
13-00098	15 x 4" Cast Brake Drum "LIFT AXLE ONLY"	64 lbs

Component Parts		
02-39702	Metfrom Two-piece, Flanged Wheel Nut,M22x1.5	.4 lbs
ALL WEIGHTS ARE BASED ON NOMINAL COMPONENT WEIGHT		

Hub Dynamic Load Ratings	
Wheel Offset	Load/Hub
6.66"	6,600 lbs

Lubricant Fill Volumes	
12.89 fl-oz	Oil Lubrication Fill Level
58.58 cubic inches	Vol. Between Cup Seats Including Spindle Displacement
16.22 fl-oz	50% Fill Level for Semi-Fluid, Including Spindle Displacement

Part Number	Application	Standout Lbs.	Bolts
Dura-Light Hubs® N Tapered Spindle Axle			
10-00114-001	Hub Piloted/Aluminum Dual Wheel	3.72"	32 02-00118
10-00114-002	Hub Piloted/Steel Dual Wheel	2.96"	31 02-00110
10-00114-003	Stud Piloted RH/Cast Brake Drum	1.89"	29 02-00027
10-00114-004	Stud Piloted LH/Cast Brake Drum	1.89"	29 20-00028
10-00114-005	Stud Piloted RH/Fused Drum	1.63"	29 02-00031
10-00114-006	Stud Piloted LH/Fused Drum	1.63"	29 20-00032
10-00114-101	ABS Hub Piloted/Aluminum Dual Wheel	3.72"	33 02-00118
10-00114-102	ABS Hub Piloted/Steel Dual Wheel	2.96"	32 02-00110
10-00114-103	ABS Stud Piloted RH/Cast Brake Drum	1.89"	30 02-00027
10-00114-104	ABS Stud Piloted LH/Cast Brake Drum	1.89"	30 20-00028
10-00114-105	ABS Stud Piloted RH/Fused Drum	1.63"	30 02-00031
10-00114-106	ABS Stud Piloted LH/Fused Drum	1.63"	30 20-00032



N Bearings	
HM212011	bearing cup - outer bore
HM218210	bearing cup - inner bore
HM212049	bearing cone - outer bore
HM218248	bearing cone - inner bore

Drums		
03-00043	16.5 x 7" Cast Brake Drum	108 lbs
89996B	16.5 x 7" Centrifuse® Brake Drum	90 lbs
13-00060	16.5 x 8.62" Balanced Brake Drum	122 lbs

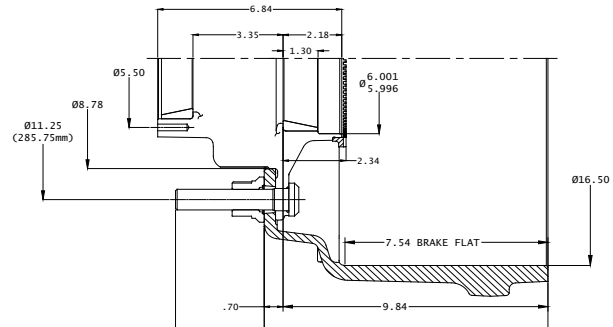
Component Parts		
02-39702	Metform - Two-piece, Flanged Wheel Nut, M22x1.5	.4 lbs

Hub Dynamic Load Ratings	
Wheel Offset	Load/Hub
0	11,250 lbs
0.56"	10,839 lbs
2.00"	10,000 lbs
2.38"	9,689 lbs
2.75"	9,484 lbs
3.50"	9,095 lbs
3.88"	8,910 lbs
6.66"	N/A

Lubricant Fill Volumes	
22 fl-oz	Oil Lubrication Fill Level
101.06 cubic inches	Vol. Between Cup Seats Including Spindle Displacement
28 fl-oz	50% Fill Level for Semi-Fluid, Including Spindle Displacement

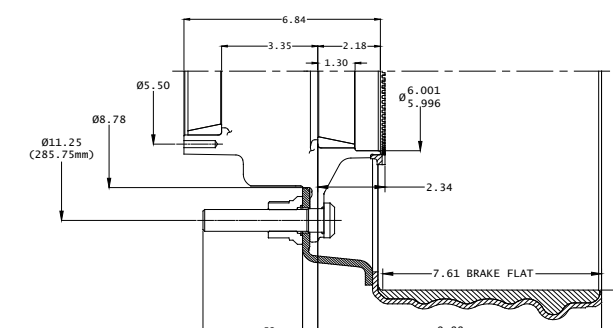
Part Number	Application	Standout Lbs.	Bolts
Dura-Light Hubs® N Tapered Spindle Axle with 16.5 x 7" Cast Brake Drum			
1003114-031043*	Hub/Cast Drum Assy, HP, AL Whl	3.30"	143 02-00118
1003114-032043*	Hub/Cast Drum Assy, HP, ST Whl	2.54"	142 02-00110
1006114-033043	Hub/Cast Drum Assy, SP, RH	1.47"	139 02-00027
1007114-034043	Hub/Cast Drum Assy, SP, LH	1.47"	139 20-00028
1003114-131043*	ABS Hub/Cast Drum Assy, HP, AL Whl	3.30"	144 02-00118
1003114-132043*	ABS Hub/Cast Drum Assy, HP, St Whl	2.54"	143 02-00110
1006114-133043	ABS Hub/Cast Drum Assy, SP, RH	1.47"	140 02-00027
1007114-134043	ABS Hub/Cast Drum Assy, SP, LH	1.47"	140 20-00028

* Includes two flanged wheel nuts



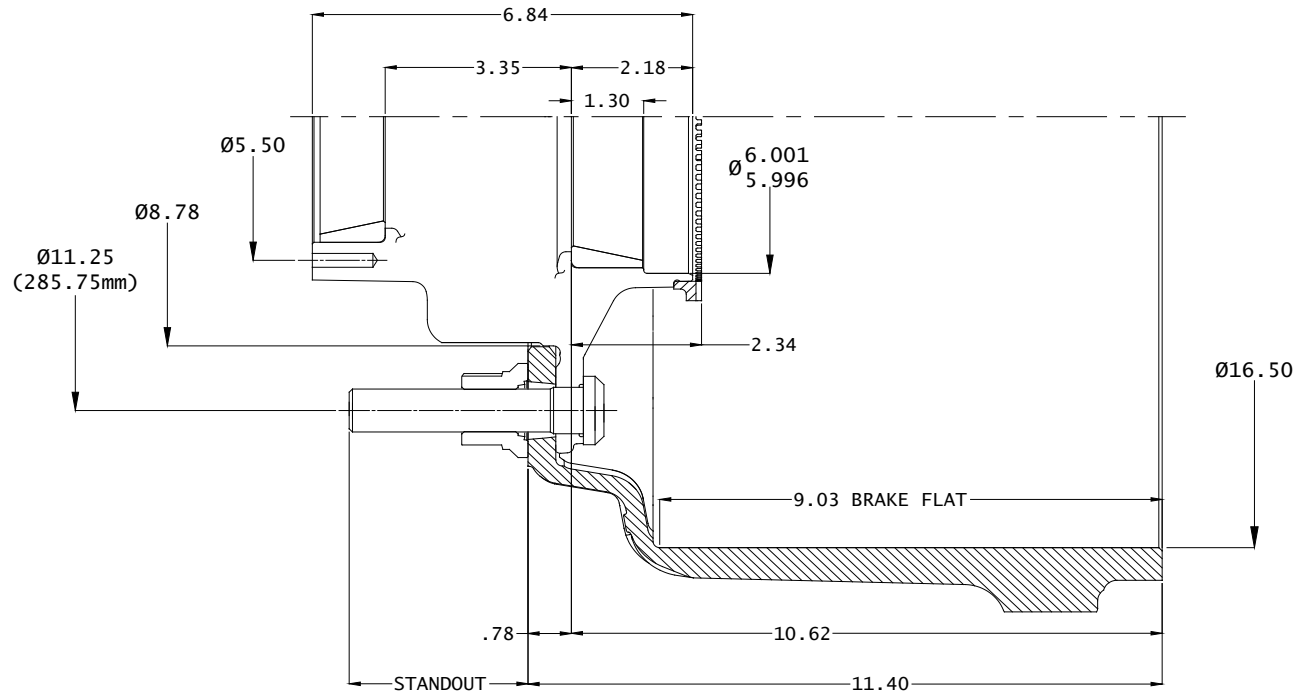
Dura-Light Hubs® N Tapered Spindle Axle with 16.5 x 7" Centrifuse® Brake Drum			
1003114-041095*	Hub/Fused Drum Assy, HP, AL Whl	3.47"	124 02-00118
1003114-042095*	Hub/Fused Drum Assy, HP, ST Whl	2.71"	123 02-00110
1006114-045095	Hub/Fused Drum Assy, SP, RH	1.33"	120 02-00031
1007114-046095	Hub/Fused Drum Assy, SP, LH	1.33"	120 20-00032
1003114-141095*	ABS Hub/Fused Drum Assy, HP, AL Whl	3.47"	125 02-00118
1003114-142095*	ABS Hub/Fused Drum Assy, HP, ST Whl	2.71"	124 02-00110
1006114-145095	ABS Hub/Fused Drum Assy, SP, RH	1.33"	121 02-00031
1007114-146095	ABS Hub/Fused Drum Assy, SP, LH	1.33"	121 20-00032

* Includes two flanged wheel nuts

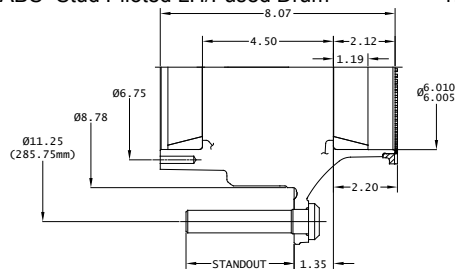


Part Number	Application	Standout	Lbs.	Bolts
<u>Dura-Light-Hubs® N Tapered Spindle Axle with 16.5 x 8.62" Balanced Brake Drum</u>				
1003114-021060*	Hub/Bal Drum Assy,HP,AL Whl	3.22"	156	02-00118
1003114-022060*	Hub/Bal Drum Assy,HP,ST Whl	2.46"	155	02-00110
1006114-023060	Hub/Bal Drum Assy,SP,RH	1.34"	152	02-00027
1007114-024060	Hub/Bal Drum Assy, SP,LH	1.34"	152	20-00028
1003114-121060* ABS	Hub/Bal Drum Assy,HP,Al Whl	3.22"	156	02-00118
1003114-122060* ABS	Hub/Bal Drum Assy,HP,St Whl	2.46"	155	02-00110
1006114-123060 ABS	Hub/Bal Drum Assy,SP,RH	1.34"	152	02-00027
1007114-124060 ABS	Hub/Bal Drum Assy,SP,LH	1.34"	152	20-00028

* Includes two flanged wheel nuts

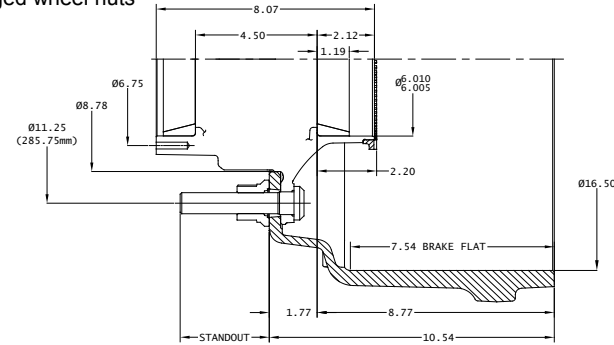


Part Number	Application	Standout Lbs.	Bolts
Dura-Light Hubs® Evolution™ for P Straight-Spindle Axles			
10-00112-001	Hub Piloted/Aluminum Dual Wheel	3.72"	34 02-00118
10-00112-002	Hub Piloted/Steel Dual Wheel	2.96"	33 02-00110
10-00112-003	Stud Piloted RH/Cast Brake Drum	1.89"	31 02-00027
10-00112-004	Stud Piloted LH/Cast Brake Drum	1.89"	31 20-00028
10-00112-005	Stud Piloted RH/Fused Drum	1.63"	31 02-00031
10-00112-006	Stud Piloted LH/Fused Drum	1.63"	31 20-00032
10-00112-101	ABS Hub Piloted/Aluminum Dual Wheel	3.72"	35 02-00118
10-00112-102	ABS Hub Piloted/Steel Dual Wheel	2.96"	34 02-00110
10-00112-103	ABS Stud Piloted RH/Cast Brake Drum	1.89"	32 02-00027
10-00112-104	ABS Stud Piloted LH/Cast Brake Drum	1.89"	32 20-00028
10-00112-105	ABS Stud Piloted RH/Fused Drum	1.63"	32 02-00031
10-00112-106	ABS Stud Piloted LH/Fused Drum	1.63"	32 20-00032



Part Number	Application	Standout Lbs.	Bolts
Dura-Light Hubs® Evolution™ for P Straight-Spindle Axles with 16.5 x 7" Cast Brake Drum			
1003112-031043*	Hub/Cast Drum Assy,HP,AL Whl	3.30"	145 02-00118
1003112-032043*	Hub/Cast Drum Assy,HP,ST Whl	2.54"	143 02-00110
1006112-033043	Hub/Cast Drum Assy,SP,RH	1.47"	141 02-00027
1007112-034043	Hub/Cast Drum Assy, SP,LH	1.47"	141 20-00028
1003112-131043*	ABS Hub/Cast Drum Assy,HP,Al Whl	3.30"	145 02-00118
1003112-132043*	ABS Hub/Cast Drum Assy,HP,St Whl	2.54"	144 02-00110
1006112-133043	ABS Hub/Cast Drum Assy,SP,RH	1.47"	141 02-00027
1007112-134043	ABS Hub/Cast Drum Assy,SP,LH	1.47"	141 20-00028

* Includes two flanged wheel nuts



P Bearings			
HM518410	bearing cup - outer bore		
HM518410	bearing cup - inner bore		
HM518445	bearing cone - outer bore		
HM518445	bearing cone - inner bore		

Drums			
03-00043	16.5 x 7" Cast Brake Drum	108 lbs	
89996B	16.5 x 7" Centrifuse® Brake Drum	90 lbs	
13-00060	16.5 x 8.62" Bal. Cast Brake Drum	122 lbs	

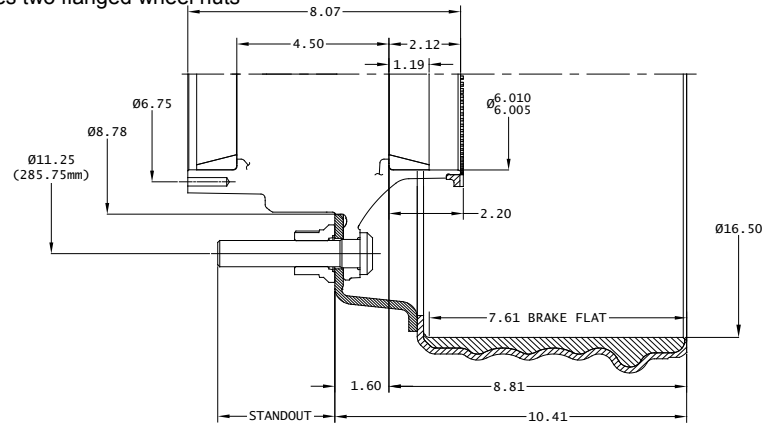
Component Parts			
02-39702	Metform - Two-piece, Flanged Wheel Nut,M22x1.5		.4 lbs

Hub Dynamic Load Ratings	
Wheel Offset	Load/Hub
0	12,500 lbs
0.56"	12,043 lbs
2.00"	11,000 lbs
2.38"	10,765 lbs
2.75"	10,538 lbs
3.50"	10,105 lbs
3.88"	9,899 lbs
6.66"	N/A

Lubricant Fill Volumes	
33.50 fl-oz	Oil Lubrication Fill Level
139.20 cubic inches	Vol. Between Cup Seats Including Spindle Displacement
38.55 fl-oz	50% Fill Level for Semi-Fluid, Including Spindle Displacement

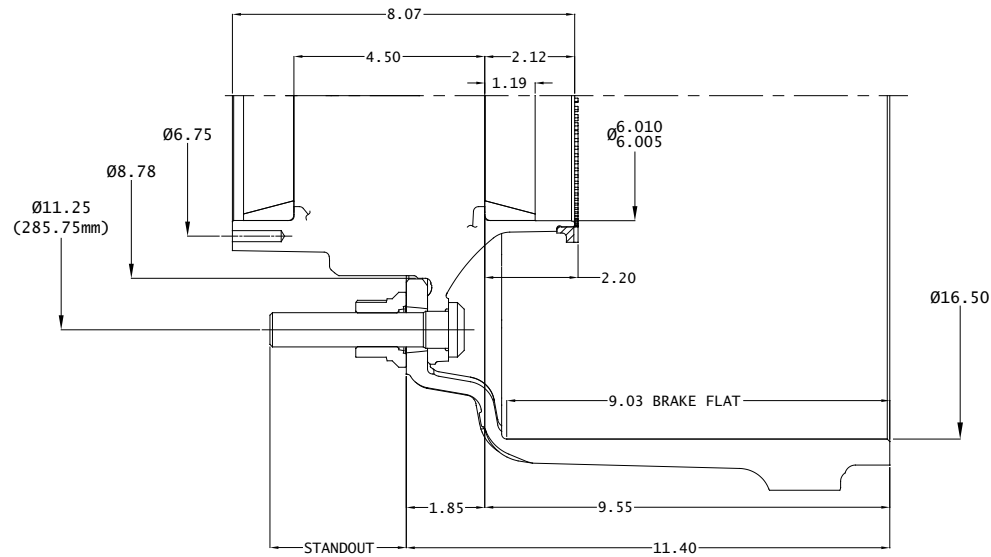
Dura-Light Hubs® Evolution™ for P Straight-Spindle Axles with 16.5 x 7" Centrifuse®			
1003112-041095*	Hub/Fused Drum Assy,HP,AL Whl	3.47"	126 02-00118
1003112-042095*	Hub/Fused Drum Assy,HP,ST Whl	2.71"	125 02-00110
1006112-045095	Hub/Fused Drum Assy,SP,RH	1.39"	122 02-00031
1007112-046095	Hub/Fused Drum Assy,SP,LH	1.39"	122 20-00032
1003112-141095*	ABS Hub/Fused Drum Assy,HP,AL Whl	3.47"	127 02-00118
1003112-142095*	ABS Hub/Fused Drum Assy,HP,ST Whl	2.71"	126 02-00110
1006112-145095	ABS Hub/Fused Drum Assy,SP,RH	1.39"	123 02-00031
1007112-146095	ABS Hub/Fused Drum Assy,SP,LH	1.39"	123 20-00032

* Includes two flanged wheel nuts



Part Number	Application	Standout	Lbs.	Bolts
Dura-Light Hubs® Evolution™ for P Straight-Spindle Axles with 16.5 x 8.62" Cast Brake Drum				
1003112-021060*	Hub/Bal Drum Assy,HP,AL Whl	3.22"	157	02-00118
1003112-022060*	Hub/Bal Drum Assy,HP,ST Whl	2.46"	157	02-00110
1006112-023060	Hub/Bal Drum Assy,SP,RH	1.34"	153	02-00027
1007112-024060	Hub/Bal Drum Assy, SP,LH	1.34"	153	20-00028
1003112-121060* ABS	Hub/Bal Drum Assy,HP,Al Whl	3.22"	158	02-00118
1003112-122060* ABS	Hub/Bal Drum Assy,HP,St Whl	2.46"	158	02-00110
1006112-123060 ABS	Hub/Bal Drum Assy,SP,RH	1.34"	154	02-00027
1007112-124060 ABS	Hub/Bal Drum Assy,SP,LH	1.34"	154	20-00028

* Includes two flanged wheel nuts



Part Number	Application	Standout	Lbs.	Bolts
Severe Duty Hubs for N Tapered-Spindle Axles				
10-00042-001	Hub Piloted/Aluminum Dual Wheel	3.96"	48	02-00045
10-00042-002	Hub Piloted/Steel Dual Wheel	3.03"	47	02-00044
10-00042-003	Stud Piloted RH/Cast Brake Drum	1.88"	44	02-00057
10-00042-004	Stud Piloted LH/Cast Brake Drum	1.88"	44	20-00058
10-00042-005	Stud Piloted RH/Fused Brake Drum	1.63"	44	02-00061
10-00042-006	Stud Piloted LH/Fused Brake Drum	1.63"	44	20-00062
10-00042-101	ABS Hub Piloted/Aluminum Dual Wheel	3.96"	49	02-00045
10-00042-102	ABS Hub Piloted/Steel Dual Wheel	3.03"	48	02-00044
10-00042-103	ABS Stud Piloted RH/Cast Brake Drum	1.88"	45	02-00057
10-00042-104	ABS Stud Piloted LH/Cast Brake Drum	1.88"	45	20-00058
10-00042-105	ABS Stud Piloted RH/Fused Brake Drum	1.63"	45	02-00061
10-00042-106	ABS Stud Piloted LH/Fused Brake Drum	1.63"	45	20-00062

N Bearings		
HM212011	bearing cup - outer bore	
HM218210	bearing cup - inner bore	
HM212049	bearing cone - outer bore	
HM218248	bearing cone - inner bore	

Drums		
03-00043	16.5 x 7" Cast Brake Drum	108 lbs
89996B	16.5 x 7" Centrifuse® Brake Drum	90 lbs

Component Parts			
02-39702	Metform - Two-piece, Flanged Wheel Nut,M22x1.5		.4 lbs
05-00046	Tone Ring - 100 Teeth, 6.77 Dia. Pitch Circle		.86 lbs

Hub Dynamic Load Ratings	
Single Wheel Offset	Load/Hub
0	12,500 lbs
0.56"	12,043 lbs
2.00"	11,000 lbs
2.38"	10,765 lbs
2.75"	10,538 lbs
3.50"	10,105 lbs
3.88"	9,899 lbs
6.66"	7,300 lbs

Estimated Lubricant Fill Volumes**	
15 fl-oz	Oil Lubrication Fill Level
61.40 in³	Vol. Between Cup Seats Including Spindle Displacement
17.01 fl-oz	50% Fill Level for Semi-Fluid, Including Spindle Displacement

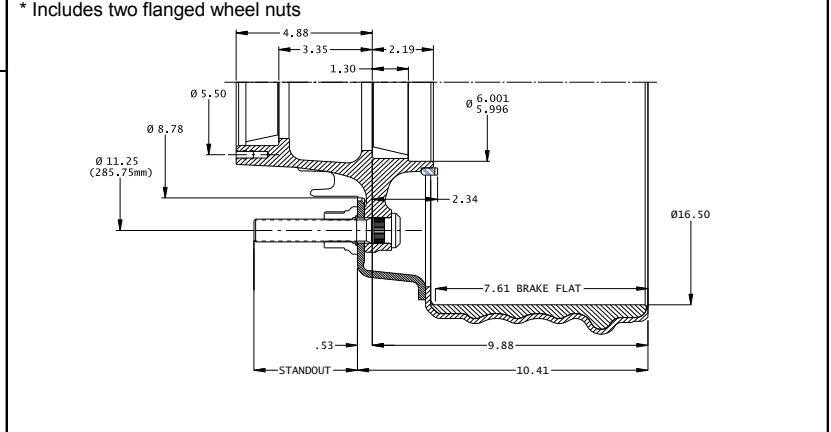
** Actual lubricant volume should be adjusted for specific components used. See TMC RP 631B

Part Number	Application	Standout	Lbs.	Bolts
Severe Duty Hubs for N Tapered-Spindle Axles with 16.5 x 7" Cast Drum				
10-00042-031*	Hub/Cast Drum Assy,HP,AL Whl	3.54"	161	02-00045
10-00042-032*	Hub/Cast Drum Assy,HP,ST Whl	2.61"	160	02-00044
10-00042-033	Hub/Cast Drum Assy,SP,RH	1.46"	157	02-00057
10-00042-034	Hub/Cast Drum Assy,SP,LH	1.46"	157	20-00058
10-00042-131*	ABS Hub/Cast Drum Assy,HP,AL Whl	3.54"	162	02-00045
10-00042-132*	ABS Hub/Cast Drum Assy,HP,ST Whl	2.61"	161	02-00044
10-00042-133	ABS Hub/Cast Drum Assy,SP,RH	1.46"	158	02-00057
10-00042-134	ABS Hub/Cast Drum Assy,SP,LH	1.46"	158	20-00058

* Includes two flanged wheel nuts

Severe Duty Hubs for N Tapered-Spindle Axles with 16.5 x 7" Centrifuse®				
10-00042-041*	Hub/Fused Drum Assy,HP,AL Whl	3.71"	139	02-00045
10-00042-042*	Hub/Fused Drum Assy,HP,ST Whl	2.78"	138	02-00044
10-00042-045	Hub/Fused Drum Assy,SP, RH	1.38"	135	02-00061
10-00042-046	Hub/Fused Drum Assy, SP,LH	1.38"	135	20-00062
10-00042-141*	ABS Hub/Fused Drum Assy,HP,AL Whl	3.71"	140	02-00045
10-00042-142*	ABS Hub/Fused Drum Assy,HP,ST Whl	2.78"	139	02-00044
10-00042-145	ABS Hub/Fused Drum Assy,SP,RH	1.38"	136	02-00061
10-00042-146	ABS Hub/Fused Drum Assy,SP,LH	1.38"	136	20-00062

* Includes two flanged wheel nuts



Dura-Light Hub[®] Rotor Assemblies

Simplicity/Ease of Maintenance

- Utilizes industry standard components
- Rotor affixed to hub using wheel bolts (*aka the Strongest Joint on the Vehicle*)
- No aluminum hub maintenance risks
- Wheel bolts can be serviced without removing hub
- Fewer parts / fewer torques

Walther EMC U-Shaped x10

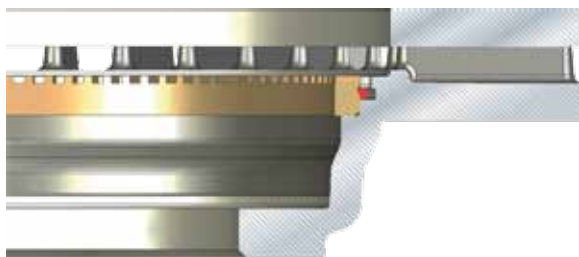


Competitive Splined x20

Competitive Flat Bolted x30



- **Simplicity/Ease of Maintenance**
- **Superior Heat Management**
- **Superior Hub Durability**
- **Light-Weight**

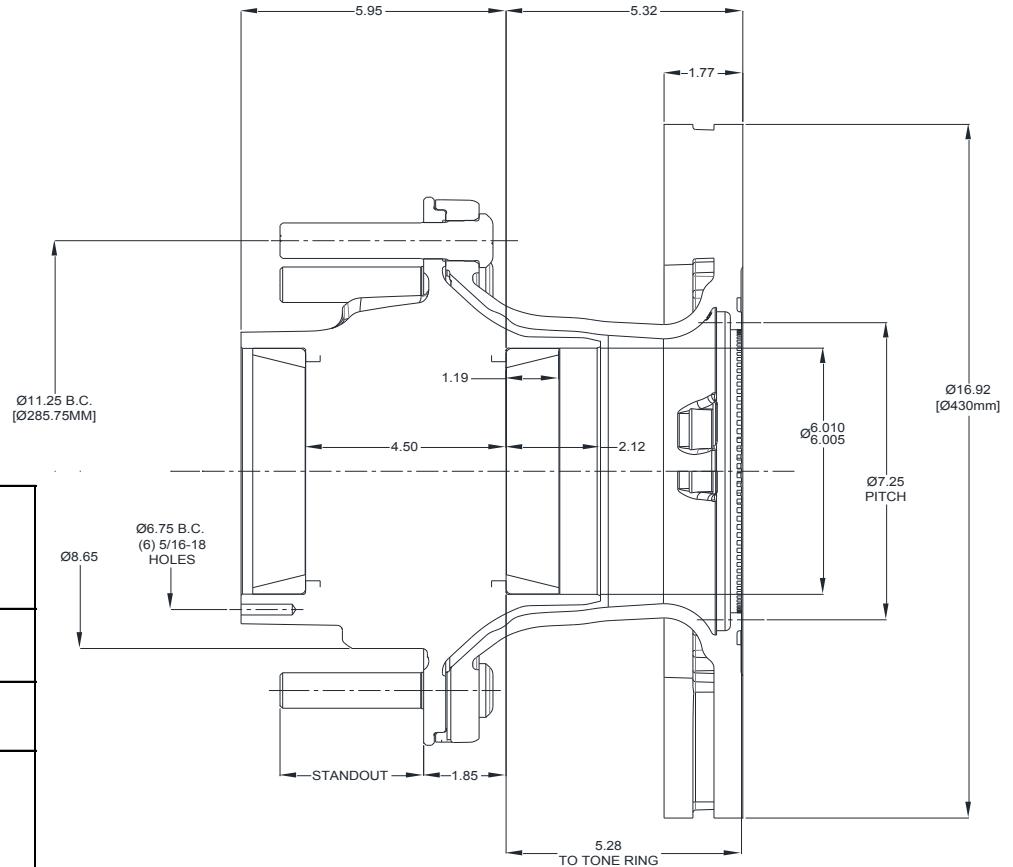


CR-ABS[™] Rotor ABS Attachment

Walther EMC's Patented ABS ring Attachment

Dura-Light® Evolution™ Hub and Rotor Assemblies for P Straight-Spindle Axles with 430mm Rotor with Fill Plug

Part Number	Application	Standout	Lbs.	Bolts	Qty/Size
1000187M-171191*	ABS Aluminum Dual Wheel	3.22"	121	02-00175	(10) M22 x 1.5
1000187M-172191*	ABS Steel Dual Wheel	2.46"	120	02-00195	(10) M22 x 1.5



P Bearings

HM518410	Bearing cup - outer bore
HM518410	Bearing cup - inner bore
HM518445	Bearing cone - outer bore
HM518445	Bearing cone - inner bore

Rotor

17-00191	430mm Rotor/Tone Ring Assembly	82 lbs
----------	--------------------------------	--------

Component Part

02-00166	9/16-18 Fill Plug - Magnetic	16-19 LB-FT
----------	------------------------------	-------------

Hub Dynamic Load Ratings

Single Wheel Offset	Load/Hub
0	12,500 lbs
0.56"	12,043 lbs
2.00"	11,000 lbs
2.38"	10,765 lbs
2.75"	10,538 lbs
3.50"	10,105 lbs
3.88"	9,899 lbs
6.66"	Prohibited

Estimated Lubricant Fill Volumes**

33.60 fl-oz	Oil Lubrication Fill Level
145.8 cubic inches	Vol. Between Cup Seats Including Spindle Displacement
40 fl-oz	50% Fill Level for Semi-Fluid, Including Spindle Displacement

* Flanged wheel not included

** Actual lubricant volume should be adjusted for specific components used. See TMC RP 631B

Dura-Light® Evolution™ Hub and Rotor Air Disc Assemblies for N Tapered-Spindle Axles with 430mm Rotor with Fill Plug

Part Number	Application	Standout	Lbs.	Bolts	Qty/Size
1000193M-171191*	ABS Aluminum Dual Wheel	3.22"	120	02-00175	(10) M22 x 1.5
1000193M-172191*	ABS Steel Dual Wheel	2.46"	119	02-00195	(10) M22 x 1.5

N Bearings

HM212011	bearing cup - outer bore
HM218210	bearing cup - inner bore
HM212049	bearing cone - outer bore
HM218248	bearing cone - inner bore

Rotor

17-00191	430mm Rotor/Tone Ring Assembly	82 LBS
----------	--------------------------------	--------

Component Part

02-00166	9/16-18 Fill Plug - Magnetic	16-19 LB-FT
----------	------------------------------	-------------

Hub Dynamic Load Ratings

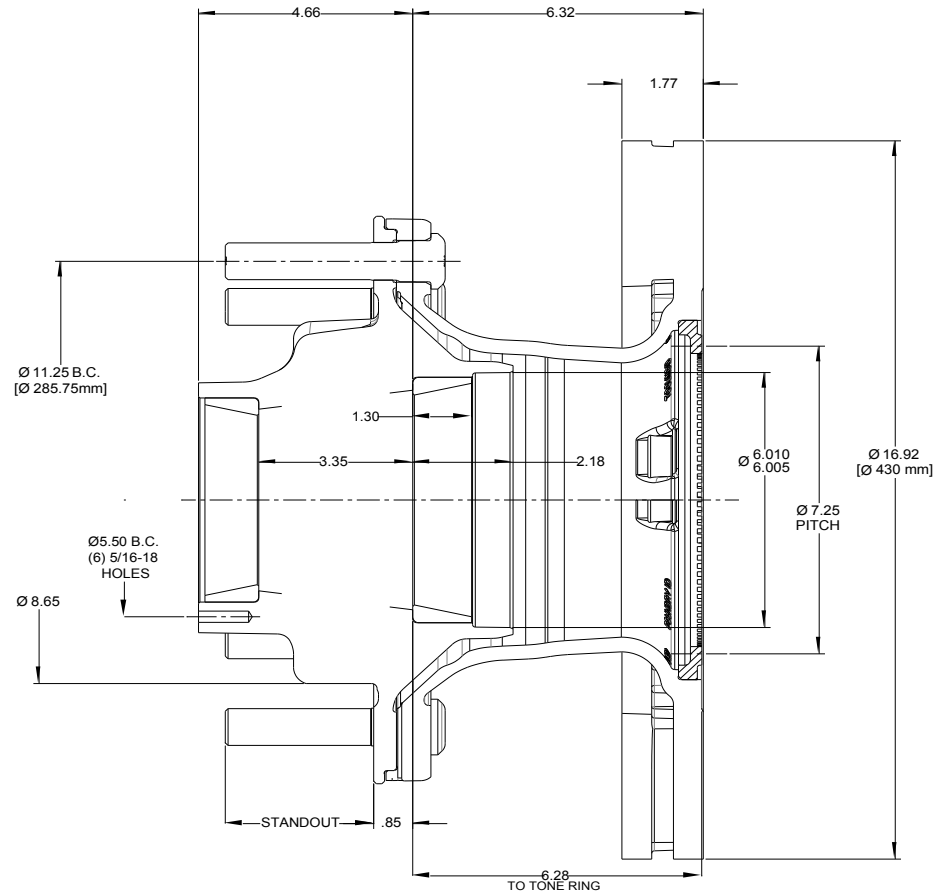
Single Wheel Offset	Load/Hub
0	11,250 lbs
0.56"	10,839 lbs
2.00"	10,000 lbs
2.38"	9,689 lbs
2.75"	9,484 lbs
3.50"	9,095 lbs
3.88"	8,910 lbs
6.66"	Prohibited

Estimated Lubricant Fill Volumes**

22.4 fl-oz	Oil Lubrication Fill Level
101.76 cubic inches	Vol. Between Cup Seats Including Spindle Displacement
32 fl-oz	50% Fill Level for Semi-Fluid, Including Spindle Displacement

* Flanged wheel not included

** Actual lubricant volume should be adjusted for specific components used. See TMC RP 631B



WALTHER EMC ADB HUB ROTORS ROTOR REPLACEMENT OPTIONS



OPTION 1 – BUY COMPLETE HUB ROTOR

ADVANTAGES:
SAVE HOURS OF LABOR
GET ALL NEW PARTS
FITS ALL BRAKES WITH 430mm ROTORS!

FOUR PART NUMBERS COVERS THE MARKET
Parallel Spindle, Alum wheel: 1000187M-171191
Parallel Spindle, Steel Wheel: 1000187M-172191
Tapered Spindle, Alum Wheel: 1000193M-171191
Tapered Spindle, Steel Wheel: 1000193M-172191

OPTION 2 – BUY ROTOR KIT AND REUSE HUB

ADVANTAGE:
LOWER ACQUISITION COST
INCLUDES NEW WHEEL BOLTS

TWO PART NUMBERS AVAILABLE
Alum wheel: 17-00191-S1
Steel Wheel: 17-00191-S2

Easy-Roll™ Brake Drums



The Walther name has a long history in wheel-end products. Over 100 years ago, George Walther revolutionized the industry by developing the first steel wheels for trucks. Steel was a dramatic improvement over the existing iron and wood wheels. Since that time, the Walther family has been a leader in the heavy duty wheel-end industry. Today, Walther EMC hubs and drums are available from virtually all major trailer manufacturers.

Walther EMC Easy-Roll™ Brake Drum Features & Benefits:

- Cast and machined in the **U.S.A.**
- Saves 4 pounds versus competitive standard cast brake drums
- Made from industry standard G3000 gray iron per SAE J431
- Low initial cost
- Precision machined for vibration-free operation
- Enhanced machining techniques provide a superior brake surface finish to prevent "shoe-slap"
- Rigorous quality controls to ensure product integrity
- Fully interchangeable with all competitors
- Certified through third party testing to be Federal Motor Vehicle Safety Standard 121 (FMVSS-121) compliant
- Meets or exceeds OEM and SAE standards
- Outperforms competitive drums in dynamometer durability testing
- Walther EMC is a TS-16949 registered company

The design of the Easy-Roll Brake Drum has been optimized using sophisticated design technologies and finite element analysis (FEA).



ALWAYS...

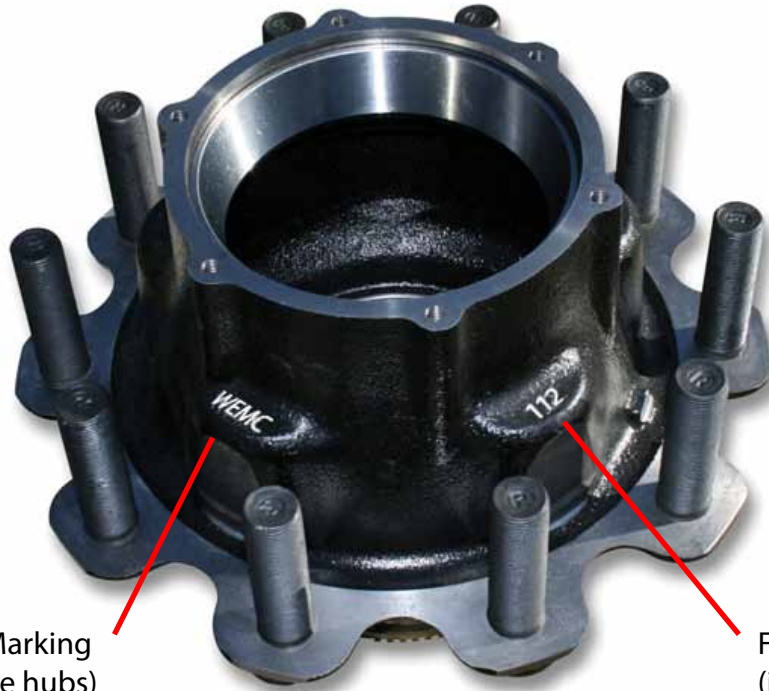
Made in America!

Walther EMC Part #	Description	Webb Part #	Motor Wheel Part #	ArvinMerito Part #	Gunite Part #	KIC Part #
03-00043	16.5" x 7"	66864F	2308712	03-123207	3600A	533033-01
13-00043	16.5" x 7" Balanced	66864B	2308709	85-123207	3600AX	60001-018
03-00050	12.25" x 7.5"	63680F	630002	-	3887	54244-01



Walther Engineering & Manufacturing Company

Phone: 937.743.8125 x 600
www.waltheremc.com



Look for "WEMC" Marking
(missing from some hubs)

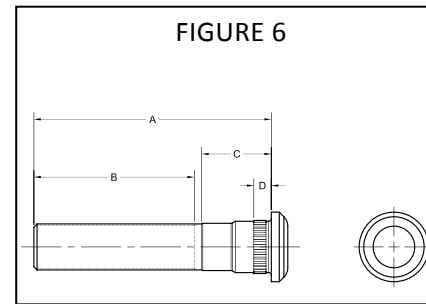
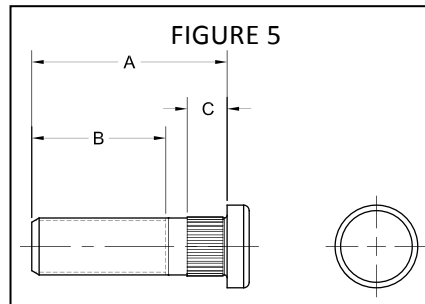
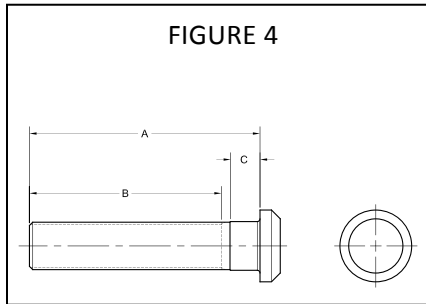
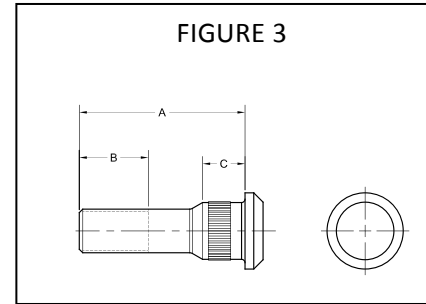
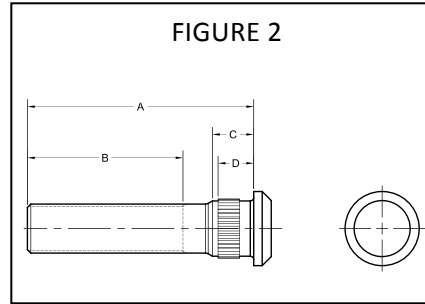
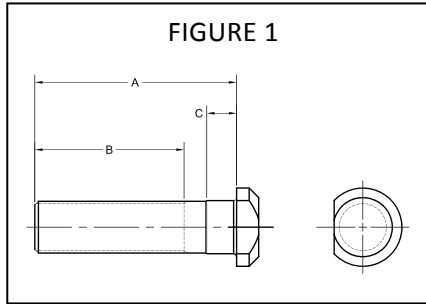
Find Hub Number
(in this case 112)

Hub as Installed on Axle:



This is Hub 011

Walther EMC Wheel Bolts and Hardware



Part Number	Description	For Hub Part No.	Figure	Dim A	Dim B	Dim C	Dim D
02-00010	Clipped Head, M22 x 1.5mm x 3.38 RH, Steel, Non-Serrated	011, 039	1	3.38	2.50	0.50	-
02-00014	Clipped Head, M22 x 1.5mm x 4.17 RH, Alum, Non-Serrated	011, 039	1	4.17	3.29	0.50	-
02-00027	Clipped Head, M22 x 1.5mm x 2.33 RH, Ball Seat, Cast Drum	112, 114	1	2.33	1.38	0.62	-
02-00031	Clipped Head, M22 x 1.5mm x 2.07 RH, Ball Seat, Centrifuse Drum	112, 114	1	2.07	1.12	0.62	-
02-00044	Round Head, M22 x 1.5mm x 4.00 RH, Steel, Serrated	042, 052, 048, 106, 161	2	4.00	2.75	0.88	0.69
02-00045	Round Head, M22 x 1.5mm x 4.93 RH, Alum, Serrated	042, 052, 048, 106, 161	2	4.93	3.68	0.88	0.69
02-00051	Round Head, M22 x 1.5mm x 2.90 RH, Steel, Serrated	023, 073, 093	2	2.90	1.65	0.88	0.69
02-00089	Round Head, M22 x 1.5mm X 4.58 RH, Alum, Serrated, Rear	167	2	4.58	3.70	0.88	0.69
02-00090	Round Head, M22 x 1.5mm x 3.59 RH, Alum, Serrated	167	2	3.59	2.34	0.88	0.69
02-00185	Round Head, M22 x 1.5mm x 2.59 RH, Serrated	164	2	2.59	1.69	0.88	0.69
02-00186	Round Head, M22 x 1.5mm x 3.39 RH, Alum, Serrated, Front	164	2	3.39	2.50	0.88	0.69
02-00057	Round Head, M22 x 1.5mm x 2.85 RH, FB Stud-Pilot, Serrated, Cast Drum	042, 106, 161	3	2.85	1.18	0.69	-
02-00061	Round Head, 3/4"-16 RH, Stud Pilot, Serrated	042, 106, 161	3	2.60	1.18	0.69	-
20-00058	Round Head, 3/4"-16 LH, Stud Pilot, Serrated, Cast Drum	042, 106, 161	3	2.85	1.18	0.69	-
20-00062	Round Head, 3/4"-16 LH, Stud Pilot, Serrated, Centrifuse Drum	042, 106, 161	3	2.60	1.18	0.69	-
02-00110	Round Head, M22 x 1.5mm x 3.46, Steel, Non-Serrated	107, 112, 114	4	3.46	2.76	0.54	-
02-00118	Round Head, M22 X 1.5mm x 4.21, Alum, Non-Serrated	112, 114	4	4.21	3.51	0.54	-
02-00059	Round Head, 5/8"-18 RH, Serrated	067	5	2.13	1.44	0.64	-
02-00175	Round Head, M22 x 1.5mm x 4.47, Alum, Serrated	187, 193	6	4.47	3.02	1.29	0.68
02-00195	Round Head, M22 x 1.5mm x 3.71, Steel, Serrated	187, 193	6	3.71	2.26	1.29	0.68

CROSS REFERENCES

106 Hub

Webb: 2023 Series

KIC: 125 Series

Gunite: HT 795 J

Motor Wheel: 410003 & 4 Series (Assemblies: 440041 & 2) Note #2 is Long Bolt

161 Hub

Webb: 2343 Series

KIC: 0143 Series

Gunite: HT 793 K

Motor Wheel: 410005 & 6 Series (Assemblies: 400043 & 4) Note #4 is Long Bolt

048 Hub

Webb #20271 -5 or 3T

043 Drum

Webb: 66864 & 66864B (BAL)

KIC: 53033-01 & 53033-018 (BAL) G3000 Iron: 60001-018

Gunite: 3600A & 3600AX (BAL)

Motor Wheel: 2308712 & 2308709 (BAL)

Meritor: 123207

050 Drum

Webb: 63680

KIC: 54244

Gunite: 3887X

Motor Wheel: 63002

114 Dura-Light N Spindle Hub (Wgt: 33# Alum Wheel ABS & 32# Stl Wheel ABS):

Conmet: #105775 (Stl Wheel, ABS) Wgt: 33#

#105776 (Alum Wheel, ABS) Wgt: 34#

#10082440 (Stl Wheel, ABS PRESET) Wgt: 41.5#

#10082442 (Alum Wheel, ABS PRESET) Wgt: 43#

112 Dura-Light P Spindle Hub (Wgt: 35# Alum Wheel ABS & 34# Stl Wheel ABS):

Conmet: #10001196 (Stl Wheel, ABS) Wgt: 36.5#

#10001198 (Alum Wheel, ABS) Wgt: 37.8#

#10001202 (Stl Wheel, ABS PRESET) Wgt: 48.5#

#10001204 (Alum Wheel, ABS PRESET) Wgt: 49.8#

WEMC	Webb	KIC	ConMet	Gunnite	Meritor (Dayton)	Motor Wheel	Performance Friction	International
Hubs								
10-00106, 10-00042	2023, 2073		10026184, 10026185, 10026182, 10026183					
10-00048	2027	001-00133(L)	105751, 105753, 105759, 105761	HT796K, HT796RC, HT796RD		410002, 410011		
01-00107 (055)	2520 RX4	002-00137(L)	10018252, 10018253, 10020110, 10020111			91572BK		
12-00109			10008820, 10008821, 10008818, 10008819					
10-00112 (039)	2343	004-00143	10001198, 10026198, 10026199, 10026197	5720-2 (HT799J)	04-15968, 04-15656-001, 04-15656-022, 04-15656-006	400117, 440117 (w/ 16.5 x 7 Drum)		
10-00114 (011)	2023, 2073	001-1006	10026184, 10026185, 10026182, 10026183	5840-1 (HT794J)	04-15984, 04-15571-005, 04-15571-006	400111, 440111 (w/ 16.5x7 Drum)		
10-00161, 10-00052			10026198, 10026199, 10026197					
Brake Drums								
03-00043	66864F, 56864, 76864	53033-01, 54261-018	107150, 10001776, 10009830	3576X, 3600A	03-123207-002	2308712, 600084		
13-00043 BAL	66864B, 56864B, 76864B	60001-018	107150, 10001776, 10009830	3576X, 3600AX	85-123207-002	2308709		2605072C1
03-00050	63680F	54244-01		3887		630002		
13-00060 BAL	66854B, 66855B, 76855B	54244-01	17638, 10012097	3780, 3807A, 3807AX	53-123581	640000, 91812B		2605078C1
Rotors								
17-00115-S1	54770P-65			D6194, D6194M	23-123572, RC414572		381.089.30	
17-00116-S1	54775P-65, 54301P				23-122729, 23-123557, RC414557		390.086.20	
17-00148-S1	54769P-65				23-123573-04, 23-123648-002, 23-123730-008, RC414573		381.089.20, 381.089.21	
17-00149-S1	54773P-65			54773P-65	23-123550-004, 23-123664-002, RC414550		381.082.20, 381.082.21	
17-00150-S1	54771P-65			D6133, D6151, D6175, D6175M, D6183	23-122897, 23-123552-004, 23-123649-002, RC414552		381.113.20, 381.113.21	
Bolts								
02-00010					E-5994 (Euclid), R0010256	88808		
02-00014								
02-00044	101161	PRT-00117	10001399					
02-00045	101160	PRT-00118	10001400					
02-00110								
02-00111								
02-00118								
02-00057	101172							
20-00058	101173							